

# POWER

KOMATSU

# EQUIPMENTS



A publication for and about Power Equipment Company's customers • [www.PowerEquipteeter.com](http://www.PowerEquipteeter.com) • Issue 2, 2026

## SN Contractors LLC



## Zack Simmons Development LLC





Andy Moon

## A message from Power Equipment Company



Dear valued customer,

As we all know, equipment downtime can delay projects and drive up costs, so it's crucial to have skilled technicians with the expertise to diagnose and resolve issues quickly. To put a spotlight on these important members of our industry who often work behind the scenes, Komatsu held a national Advanced Technician Competition (ATC) at its Cartersville Customer Center in Georgia, where competitors were judged on technical performance, safety, professionalism and documentation. This issue offers an in-depth look of the event.

If you have been considering adding a new excavator to your fleet, Komatsu's next-generation PC220LC-12 and PC220LCi-12 models deliver comfort, control and automation. The PC220LCi-12 includes the latest intelligent machine control (IMC) 3.0 technology with two new features: swing-to-line and travel-along-line. Check out the article inside to learn more about these advancements and the benefits of both models.

We also highlight Komatsu's Smart Construction Dashboard, a cloud-based solution that offers near-real-time visibility into jobsite conditions. It helps users confirm quantities, monitor progress, and reduce the guesswork that can surround earthwork and site development.

Additionally, there are many more valuable articles I think you will enjoy, such as a summary of Komatsu's Quarry Days and success stories of our featured customers: SN Contractors LLC and Zack Simmons Development LLC.

As always, if there is anything we can do for you, please feel free to contact one of our branch locations covering Tennessee, Arkansas, and parts of Virginia and Mississippi.

Sincerely,

Power Equipment Company

A handwritten signature in black ink, appearing to read "Andy Moon". The signature is fluid and cursive, written over a light-colored background.

Andy Moon,  
President

## In this issue

### From first cut to final grade pg. 4

Delve into how SN Contractors combines hands-on expertise, IMC technology and trusted relationships to deliver comprehensive civil projects.

### Smart alignment features take center stage pg. 9

Learn about Komatsu's PC220LC-12 and PC220LCi-12 excavators.

### Small team, big results pg. 10

Find out how Zack Simmons Development proves that expertise and integrity — not size — define success in the earthmoving industry.

### New compact track loader pg. 15

Check out the Takeuchi TL11R3.

### A clear picture of your projects pg. 18

Take a look at Komatsu's Smart Construction Dashboard.

### Showstopping solutions pg. 19

Get a glimpse of the SENNEBOGEN equipment displayed at CONEXPO-CON/AGG 2026.

### Inside Komatsu's Quarry Days pg. 20

Uncover Komatsu's expanding lineup of purpose-built quarry and mining equipment.

### Major upgrades to mini paver pg. 25

View the VÖGELE SUPER 800-5 P mini paver.

### Engineered for extreme durability and precision pg. 27

See Epiroc's next-generation PCD drill bits.

### Skill, speed and interactions tested pg. 28

Read about Komatsu's national Advanced Technician Competition (ATC), which put customer uptime front and center as competitors performed inspections and identified issues.

**POWER**  
EQUIPMENT

THE POWER TO  
PERFORM

www.PowerEquipCo.com

An equal opportunity, affirmative action employer

**KOMATSU**

Published for Power Equipment Company.

© 2026 Construction Publications Inc. Printed in the USA.

## Leadership Team

**Andy Moon,**  
President

**Shawn Robins,**  
Vice President,  
Product Support

**Tim Hancock,**  
General Manager,  
Credit & Finance

**Mike Luster,**  
Vice President,  
Regional Sales Manager  
(Nashville)

**Darryl Thompson,**  
Vice President,  
Regional Sales Manager  
(Memphis, Tupelo)

**Justin Kiser,**  
Vice President,  
Regional Sales Manager  
(Knoxville, Kingsport, Chattanooga)

**Tim Hooper,**  
Regional Manager,  
Northwest Arkansas

**Brian Bourne,**  
Regional Sales Manager,  
Central and South Arkansas

**Steve Woodby,**  
Corporate Sales Administration  
and Inventory Manager

**Bill Warr,**  
General Product Support Manager  
(ETN)

**Billy Ham,**  
General Product Support Manager  
(Little Rock)

**Wayne White,**  
General Product Support Manager  
(Nashville, Memphis and Tupelo)

**Jami Frank,**  
Senior Marketing Specialist

### Chattanooga, TN

4295 Bonny Oaks Drive  
(423) 894-1870  
(800) 873-0963

### Kingsport, TN

1487 Rock Springs Road  
(423) 349-6111  
(800) 873-0964

### Knoxville, TN

3300 Dozer Lane  
(865) 577-5563  
(800) 873-0961

### Memphis, TN

3050 Ferrell Park Cove  
(901) 346-9800  
(800) 873-0965

### Nashville (La Vergne), TN

320 Waldron Drive  
(615) 213-0900  
(800) 873-0962  
Drill Sales: (615) 641-3000

### Tupelo (Saltville), MS

1545 Highway 45  
(662) 869-0283  
(800) 873-0967

### Little Rock, AR

2801 W. 65th Street  
(501) 823-4400

### Springdale, AR

781 E. Randall Wobbe Lane  
(479) 927-1672

# From first cut to final grade

## SN Contractors combines hands-on expertise, IMC technology and trusted relationships to deliver comprehensive civil projects



Nick Haynes,  
Owner

**N**ick Haynes has spent more than four decades shaping the infrastructure of the Mid-South. As the owner of SN Contractors LLC, a site civil contracting company based in West Memphis, Arkansas, he's built his business around one simple idea: surround yourself with good people and the right equipment, and growth will follow.

"I started in 1979 working part time for Warren Brothers, which eventually became APAC," recalled Haynes. "I spent 34 years there, the last 24 as a division president. When the company was acquired by Oldcastle CRH, our models didn't quite align at first, but it turned out to be a blessing. They became one of our biggest customers and best partners."

By 2014, Haynes decided to strike out on his own. A longtime colleague convinced him to join a small grading outfit, and within a decade, they grew annual revenue from \$1.5 million to nearly \$30 million. When that partnership ended, Haynes formed SN Contractors and committed to providing opportunity for the next generation.

---

***"Growth has been steady, and a lot of that comes from treating people right."***

- Nick Haynes,  
Owner,  
SN Contractors LLC

---

"We have several age groups and skillsets under one roof," said Haynes. "We want everyone to have an opportunity to learn or pass along their knowledge. From full-site solutions to asphalt and concrete, there is opportunity for everyone."

SN Contractors performs a range of work that spans grading, utilities, drainage, concrete and asphalt paving. The team's versatility allows the company to handle anything from small private developments to large infrastructure projects.

"We've done everything from \$1,000 jobs to \$40 million site packages," described Haynes.

### Customer snapshot

**Company:** SN Contractors LLC

**Location:** West Memphis, Arkansas

**Established:** 2023

**Employees:** 60+

**Area of expertise:** Comprehensive site civil contracting, including grading, utilities, drainage, concrete and asphalt paving, and full site packages for private and public projects

**Komatsu equipment:** D51PXi-24 and D61PXi-24 IMC dozers

**Komatsu technology:** Intelligent machine control (IMC)

One of SN Contractors' recent equipment acquisitions is a Komatsu D61PXi-24 intelligent machine control (IMC) dozer.





With a Komatsu D51PXi-24 IMC dozer, an operator cuts material to grade for a new access road.

"Our largest projects include the Carvana site and the Southland Casino expansion. We took both from stripping to striping and did everything but the building."

Today, SN Contractors employs more than 50 people. The company has grown rapidly since its founding just two years ago, expanding its backlog and building a reputation for reliability.

"When we started, we brought about 36 employees from our old company," noted Haynes. "Now, we're north of 60. Growth has been steady, and a lot of that comes from treating people right. What goes around comes around."

### Investing in technology

For Haynes, that philosophy has carried the business through decades of change. But in recent years, the biggest evolution hasn't been in people, it's been in technology.

"Even with all the advancements, this is still a people business, but technology is a must," emphasized Haynes. "We have no choice. You either grow or you die. Every employee wants to earn more each year, so you have to become more productive. That's where equipment and support come in."

To stay ahead, SN Contractors recently added Komatsu D51PXi-24 and D61PXi-24 intelligent machine control (IMC) dozers from Power Equipment Company.

"We've used GPS and 3D modeling since the early 2000s," shared Haynes. "We were one of the first to use stringless paving and lidar in our region. When we decided to update our fleet, we wanted to make sure we had the best technology and support to match."

---

***"Power Equipment came in with their technology team and showed us what Komatsu had done with its IMC lineup."***

*- Nick Haynes,  
Owner,  
SN Contractors LLC*

---

The decision led SN Contractors to Komatsu and Power Equipment.

"Power Equipment came in with their technology team and showed us what Komatsu had done with its IMC lineup," stated Haynes. "We already had a long history with Topcon, and Komatsu's integration with Topcon made the transition seamless. The support sealed the deal."

*Continued...*

# 'Landon and Jake have been great'

... continued

That support came from Territory Manager Landon McFadden and Technology Solutions Expert (TSE) Jake Spradley, who worked closely with SN Contractors' operators.

---

***"The technology allows our greener operators to work like they've been doing it for 10 years. We're able to bridge that experience gap while maintaining accuracy and efficiency."***

*- Nick Haynes,  
Owner,  
SN Contractors LLC*

---

"Landon and Jake have been great," Haynes commented. "Jake is sharp, personable and can explain the technology in a way that makes sense to our guys. Power Equipment let us run a demo machine for a couple of months, and once our operators got used to it, there was no going back. If I'd sent that dozer back, they would've revolted."

According to Haynes, the productivity improvements were immediate.

## By the numbers

- **\$1,000 to \$40 million** project range
- Estimated **10** years of operator experience are effectively replicated through IMC technology, allowing newer employees to achieve veteran-level accuracy, according to SN Contractors



(L-R) SN Contractors' Nick Haynes meets with Power Equipment's Landon McFadden.

"The technology allows our greener operators to work like they've been doing it for 10 years," Haynes remarked. "We're able to bridge that experience gap while maintaining accuracy and efficiency."

Beyond machine control, Haynes believes telematics and remote diagnostics are essential tools for uptime and communication.

"Gone are the days when you could pull a machine under a tree and fix it with a wrench," Haynes declared. "Now, you plug in, read the diagnostics, and talk to the dealer. Power Equipment can see the codes, walk us through it, and get us back up fast. That's a huge advantage."

Haynes also credits his success to collaboration. From equipment dealers to subcontractors, he values partnerships built on mutual respect.

"I can buy a dozer from anyone, but what I'm really buying is support," Haynes reflected. "Landon, Jake and Power Equipment understand that. They've earned our trust through their follow-through."

## Continued growth

Looking ahead, Haynes expects continued growth for SN Contractors. However, he also emphasizes the need for balance.

"We want to stay within a few hours of home," Haynes said. "That keeps our people coming home at night and helps us control quality. Growth is important, but so is stability."

As for his outlook on the industry, Haynes remains both realistic and optimistic.

"We're seeing more change every 24 months than we used to see in 15 years," Haynes reflected. "AI, automation, intelligent machines; it's all coming fast. You don't have to know everything, but you'd better be open to learning."

Ultimately, Haynes believes that the right mix of people, equipment and technology will carry SN Contractors forward.

"At the end of the day, it's still about teamwork," Haynes concluded. "Technology helps us work smarter, but people make it happen. That's what keeps us moving, and that's what will keep us growing." ■

*\*The opinions expressed here are based on the customer's specific experience. Results may vary.*



**LEEBOY**  
FAYAT GROUP

# BUILDING AMERICA ONE ROAD AT A TIME

*LeeBoy's Heavy Commercial pavers deliver a host of features and benefits to the paving professional above their competition. LeeBoy's best in class designs represent the highest production pavers minimizing power losses with more efficient hydraulic systems.*

- ✔ Full size end auger flight combined with rounded auger back move material to the extension efficiently.
- ✔ Belt driven generator reduces power losses and generates less hydraulic heat load for lower operating temperatures.
- ✔ Counter rotating tracks and compact machine designs improve maneuverability and efficiency in tight spots.
- ✔ S-curve heating elements also provide more even heating of the screed plate.

LEARN MORE AT [WWW.LEEBOY.COM](http://WWW.LEEBOY.COM)

**POWER**  
EQUIPMENT

# KOMATSU

## Next-level excavators designed to empower operators



PC220LCi-12

When your operators are happy and have what they need to perform at their best, your jobsite hums and your entire operation reaps the rewards. That's the thinking behind the all-new Komatsu PC220LC-12 and PC220LCi-12 with the latest intelligent machine control — IMC 3.0.

From the advanced cab with exceptional comfort and ergonomics to industry-leading smart technology, both models feature the most advanced working environment we've ever created for an excavator.

Discover more

[komatsu.com/PC220LCi-12](https://komatsu.com/PC220LCi-12)



© 2026 Komatsu Ltd. or one of its subsidiaries. All rights reserved.

# POWER

EQUIPMENT

[www.PowerEquipCo.com](http://www.PowerEquipCo.com)

### KNOXVILLE

3300 Dozer Lane  
Knoxville, Tennessee 37920  
(865) 577-5563  
1-(800) 873-0961

### KINGSPORT

1487 Rock Spgs. Road  
Kingsport, Tennessee 37664  
(423) 349-6111  
1-(800) 873-0964

### CHATTANOOGA

4295 Bonny Oaks Drive  
Chattanooga, Tennessee 37406  
(423) 894-1870  
1-(800) 873-0963

### TUPELO

1545 Highway 45  
Saltville, Mississippi 38866  
(662) 869-0283  
1-(800) 873-0967

### NASHVILLE

320 Waldron Drive  
La Vergne, Tennessee 37086  
(615) 213-0900  
1-(800) 873-0962

### LITTLE ROCK

2801 W 65th Street  
Little Rock, Arkansas 72209  
(501) 823-4400

### MEMPHIS

3050 Ferrell Park Cove  
Memphis, Tennessee 38116-3502  
(901) 346-9800  
1-(800) 873-0965

### SPRINGDALE

781 E Randall Wobbe Lane  
Springdale, Arkansas 72764  
(479) 927-1672

# Smart alignment features take center stage

Both next-generation PC220LC-12 and PC220LCi-12 excavators deliver comfort, control and automation, while the latter features even more advanced technology

**K**omatsu's new PC220LCi-12 excavator, with the latest intelligent machine control update (IMC 3.0), introduces two significant technological features designed to help operators work more efficiently: swing-to-line and travel-along-line. These features build on Komatsu's growing lineup of intelligent automation, offering refined machine movement that supports accuracy, consistency and reduced operator effort on trenching-focused jobs.

Swing-to-line is selectable by tapping a polyline and marking it as a checkable option. Once activated, the machine automatically restricts unnecessary overswing when returning to the trench after dumping, ensuring the upper structure stays aligned with the intended cut. Operators benefit from smoother, more predictable cycle movements and better trench-to-dump workflow rhythm.

Travel-along-line, also enabled by selecting a polyline as a checkable option, helps the excavator maintain a square position to the center of the trench line as it advances. By minimizing the need for constant micro-repositioning, this background function helps operators stay on the line, improve trench continuity and reduce time lost to realignment.

These new capabilities build on an already-advanced technology base of the companion model without IMC 3.0, the PC220LC-12. Even without the addition of intelligent machine control, the PC220LC-12 includes some powerful integrated baseline smart tools: 2D machine control, 2D boundary control and payload monitoring.

But for operations looking to level up on cutting-edge technology that helps good operators do a great job, the PC220LCi-12 adds the IMC 3.0 platform for advanced automation. Features such as auto grade assist, bucket angle hold, compaction control, minimum distance control, auto swing, advanced payload monitoring and industry-first integrated 3D boundary control help operators work more precisely and productively across the full jobsite. Auto swing and travel stop functionality is another notable factory-installed feature — another industry first for excavators.

## Added comfort and exceptional performance

Comfort and performance remain core strengths of both models. The redesigned cab provides

28% more space, 30% more legroom, significantly improved visibility, reduced noise and vibration, and a high-quality heated air-suspension seat. An 8-inch HD monitor gives operators easy access to machine data and customization settings.

A new electronically controlled hydraulic system paired with a high-output engine delivers tangible performance gains. Compared to the previous Komatsu PC210LC-11, operations can benefit from up to:

- 8% greater digging force
- 7% more lift capacity
- 20% lower fuel costs
- 18% higher workload productivity with a new P plus mode

Komatsu also prioritized safety and operator assurance. Features such as rollover avoidance, KomVision 360-degree camera coverage, object detection, automatic deceleration controls and seat belt reminders promote zero harm. Maintenance is streamlined with ground-level service points and longer replacement intervals, helping reduce costs by up to 20%.

For contractors seeking machines that enhance operator capability, reduce fatigue and deliver smarter, more consistent trenching performance, both next-generation excavators represent a major step forward. And, with the introduction of swing-to-line and travel-along-line on the PC220LCi-12 with IMC 3.0, this more advanced excavator levels up intelligent automation in practical, productivity-driven ways that support operators shift after shift. ■

*\*All percentage claims are based on a comparison to the previous PC210LC-11 model. Reductions in maintenance costs are due to longer replacement intervals for hydraulic oil and oil filters and longer cleaning intervals for the particulate filter.*



Komatsu's PC220LCi-12 intelligent machine control (IMC) 3.0 excavator now features swing-to-line and travel-along-line functions that help operators work more efficiently.

# Small team, big results

## Zack Simmons Development proves that expertise and integrity — not size — define success in the earthmoving industry



Zack Simmons,  
Owner

**Z**ack Simmons grew up around dirt work. His great-grandfather and grandfather were both operators, and by the time he was old enough to run a machine, he already knew it was what he wanted to do. After years of working alongside his family, he decided to branch out and start his own company — a decision that would turn his lifelong passion into a thriving business.

"I've been around dirt work my whole life, and it's just something I enjoy doing," shared Simmons, owner of Zack Simmons Development LLC (ZSD). "I like being outside, taking a raw piece of property, and turning it into something usable. You can look back at the end of the day and see exactly what you've accomplished."

### Customer snapshot

**Company:** Zack Simmons Development LLC (ZSD)

**Location:** New Albany, Mississippi

**Established:** 2020

**Employees:** 3

**Areas of expertise:** Residential site preparation, land clearing, and pond and lake construction

**Komatsu equipment:** PC210LC-11 excavator; D51PX-24 dozer

A ZSD operator digs out shrubs and material with a Komatsu PC210LC-11 excavator at a multi-acre land renovation project.



Based in New Albany, Mississippi, ZSD specializes in residential site preparation, land clearing, and pond and lake construction. The company has been in business for about six years, though its start came during an uncertain time. Simmons launched ZSD in the midst of the COVID-19 pandemic, but his determination and work ethic quickly helped the business take off.

"We hit the ground running," Simmons recalled. "I don't know that we've ever sat at home because we didn't have something to do. There's always been work, and that's a blessing."

ZSD's territory includes North Mississippi, with projects extending into Alabama and Tennessee. However, most of ZSD's work is close to home.

"For the most part, we stay around New Albany," noted Simmons. "We work in Tippah, Union and Pontotoc counties. We like being local, and we've built a good reputation here."

That reputation is what drives most of the company's business. ZSD doesn't rely on bid work or advertising — just results.

---

***"Being honest, doing good work and treating people right — that's what keeps us busy."***

*- Zack Simmons,  
Owner,  
Zack Simmons Development LLC*

---

"Almost all our work comes from word-of-mouth," emphasized Simmons. "People see the quality of what we do and tell their friends or neighbors. Being honest, doing good work and treating people right — that's what keeps us busy."

### Reliable equipment

Today, ZSD operates with a small team. Simmons and two other operators run a combination of excavators, dozers, skid steers and trucks.

"We stay busy with three guys," remarked Simmons. "We're bigger than the small guys but smaller than the big guys. That gives us a nice niche — we can take on more complex work without getting spread too thin."



▶ VIDEO

ZSD uses its Komatsu PC210LC-11 excavator and Komatsu D51PX-24 dozer in tandem to remove and pile material during clearing.

Among the most important tools in the company's lineup are its Komatsu machines, which have played a big role in the company's growth and efficiency, according to Simmons.

***"I love the Komatsus.  
They're great machines."***

*- Zack Simmons,  
Owner,*

*Zack Simmons Development LLC*

"We have a Komatsu PC210 excavator and a Komatsu D51 dozer," stated Simmons. "I've had smaller Komatsu dozers before — a D37 and a D39 — but when we started taking on bigger projects, I knew it was time to step up to the D51. It's a perfect fit for what we do. I love the Komatsus. They're great machines."

The Komatsu D51PX-24 dozer is central to much of ZSD's sitework. Its power, balance and versatility make it a go-to machine for everything from finish grading to large clearing projects.

"That D51 can do anything," commented Simmons. "It's not too big for a house pad, but

it's strong enough to handle large dirt jobs. It's smooth, fast and just a solid machine."

Comfort and operator visibility also play a big part in Simmons' satisfaction with Komatsu dozers.

"The cab on that D51 is quiet and comfortable, and you can just see so good out of it," described Simmons. "You can run it all day and not feel beat up. Once you've operated one, it's hard to go back to anything else."

In comparing Komatsu to competitors, Simmons doesn't hesitate.

"I've run other brands, but that D51 will flat-out out-push them," Simmons declared. "They're just smooth, well-balanced machines that do what you need them to do every time."

Simmons is equally impressed with the Komatsu PC210LC-11 excavator, which he describes as both versatile and reliable.

"The PC210 is one of our most-used machines," Simmons reported. "We use it



Discover more at  
[PowerEquipmenteer.com](http://PowerEquipmenteer.com)

*Continued...*

# 'The PC210 is one of our most-used machines'

... continued

for clearing, loading trucks and excavation work. It's our workhorse that runs every day. It's also easy to move from site to site but still big enough to handle the work we do. The hydraulic thumb is nice, and it's smooth and fast. I love it."

## Full-service support

For Simmons, the value of Komatsu equipment goes beyond performance.

### By the numbers

- **2 1/2** days is the typical time it takes ZSD to complete a small **2-acre** clearing and grading project
- **2,000** hours of maintenance covered through Komatsu Care, allowing ZSD to focus on production instead of service downtime



(L-R) ZSD's Zack Simmons and Power Equipment's Chad Roberts work together to find the best equipment for ZSD and service ZSD's machines.

A ZSD operator uses a Komatsu D51PX-24 dozer to gather and push a large pile of cleared material with ease.



It's about the people standing behind it, including Power Equipment Company and Territory Manager Chad Roberts.

"Power Equipment takes care of me," said Simmons. "I can walk in and know everybody. They treat me like a big customer, even though I'm a small outfit. If I have a problem, they fix it. If I need something, they get it to me fast."

---

### "Power Equipment takes care of me."

- Zack Simmons,  
Owner,  
Zack Simmons Development LLC

---

That level of support extends across the entire Power Equipment team.

"Chad always calls to see if I need anything and picks up the phone when I call him," noted Simmons. "Rob Tucker and the parts guys are great. You call them for something, and most of the time you'll get it the next day. The service guys, Devin and Johnny, always take care of us too. Mr. Charlie with customer support even calls every now and then to check in and make sure we have what we need."

Maintenance is simple and stress-free, which is another key reason why Simmons sticks with Power Equipment and Komatsu.

"Power Equipment handles all the maintenance for the first 2,000 hours with the Komatsu Care plan," Simmons explained. "After that, we just stay on top of filters and keep the machines clean. With newer equipment like this, we haven't had to worry about downtime."

## Future

As Simmons looks ahead, he plans to keep ZSD the same size. He wants to stay focused on projects built through relationships.

"I'm not trying to have a hundred pieces of equipment," Simmons stated. "I like being able to work directly with landowners and homeowners, building something for people in my own community. That's what I enjoy."

Even with a full schedule, Simmons remains grounded in the work itself.

"I just like to move dirt," he said with a smile. "Some people have hobbies, and this is mine — and I get paid to do it." ■

*\*The opinions expressed here are based on the customer's specific experience. Results may vary.*

# The next generation of productivity



The new WA485-11 and WA475-11 wheel loaders are built to help you move more, with significant performance improvements in fuel consumption, engine power, breakout and lifting force and climbing speed — not to mention advanced cabs and controls.

Discover more ► [komatsu.com](https://www.komatsu.com)

**KOMATSU**

© 2025 Komatsu Ltd. or one of its subsidiaries. All rights reserved.

**POWER**  
EQUIPMENT

[www.PowerEquipCo.com](https://www.PowerEquipCo.com)

**KNOXVILLE**

3300 Dozer Lane  
Knoxville, Tennessee 37920  
(865) 577-5563  
1-(800) 873-0961

**KINGSPORT**

1487 Rock Spgs. Road  
Kingsport, Tennessee 37664  
(423) 349-6111  
1-(800) 873-0964

**CHATTANOOGA**

4295 Bonny Oaks Drive  
Chattanooga, Tennessee 37406  
(423) 894-1870  
1-(800) 873-0963

**TUPELO**

1545 Highway 45  
Saltito, Mississippi 38866  
(662) 869-0283  
1-(800) 873-0967

**NASHVILLE**

320 Waldron Drive  
La Vergne, Tennessee 37086  
(615) 213-0900  
1-(800) 873-0962

**LITTLE ROCK**

2801 W 65th Street  
Little Rock, Arkansas 72209  
(501) 823-4400

**MEMPHIS**

3050 Ferrell Park Cove  
Memphis, Tennessee 38116-3502  
(901) 346-9800  
1-(800) 873-0965

**SPRINGDALE**

781 E Randall Wobbe Lane  
Springdale, Arkansas 72764  
(479) 927-1672



WORK  
AT THE  
SPEED OF

**INSTINCT.**



**KEY FEATURES:**

- EH CONTROLS
- 107.3 HP ENGINE
- KEYLESS START
- STEERING DRIFT ADJUSTMENT
- SELF-LEVEL UP AND DOWN<sup>1</sup>

<sup>1</sup>Up: Standard. Down: Included with optional angle sensor.

Buried lines. Tight deadlines. Zero room for error. Takeuchi's new **TL11R3 Compact Track Loader** meets you with surgical precision thanks to electric-over-hydraulic (EH) controls that move when you move. Adjust for drift. Stay level on the lift. Power through with 107.3 hp that's steel-built to take a beating and match your pace, move for move. This isn't just control — it's second nature.

**POWER**  
EQUIPMENT

[www.PowerEquipCo.com](http://www.PowerEquipCo.com)

SCAN THE CODE TO LOAD  
UP ON ALL THE DETAILS  
[TL11R3.COM/UTILITY](http://TL11R3.COM/UTILITY)



**TL11R3**

**takeuchi**

THE MARK OF TOUGHNESS

# New compact track loader

## Takeuchi introduces TL11R3 that delivers high torque and horsepower along with leading bucket breakout and lift-arm forces

**T**akeuchi has introduced the sixth model in its compact track loader product line: the TL11R3 that features new electric-over-hydraulic (EH) controls for greater precision in loader arm, bucket and travel speed operation.

"The TL11R3 delivers impressive torque and horsepower along with leading bucket breakout and lift-arm forces for maximum performance," said Dylan Freeman, Product Manager, Takeuchi-US. "And, with the addition of low-effort EH controls, this track loader helps even the most skilled operators work with more precision and control — elevating their craft while reducing fatigue."

---

***"The TL11R3 delivers impressive torque and horsepower along with leading bucket breakout and lift-arm forces for maximum performance."***

*– Dylan Freeman,  
Product Manager,  
Takeuchi-US*

---

The TL11R3's advanced EH controls also enhance jobsite productivity by making several new features possible. Operators can instantly switch between ISO and H patterns through the machine's monitor to match their preferences. The TL11R3's self-leveling up-and-down feature automatically keeps the bucket or attachment level while raising or lowering the loader arm for improved load handling. Fourteen-pin detent provides continuous power to electrically operated attachments for uninterrupted operation.

### Adjustable boom, bucket and travel sensitivity

Operators can also adjust the track loader's boom, bucket and travel sensitivity to match their needs for greater control during high-precision work. In low-clearance environments, the arm height limit feature prevents the TL11R3's loader arm from exceeding a predetermined height, protecting attachments and surroundings from accidental damage.

Available in both standard- and high-flow configurations, the TL11R3 allows operators to adjust flow rates and attachment presets

from inside the cab. The high-flow configuration delivers up to 40 gallons per minute of auxiliary flow for use with more powerful attachments like mulchers, cold planers and stump grinders. Both configurations come equipped with a 14-pin connector enhancing versatility and functionality for a wide range of attachments. Swapping attachments is simple with the mechanical universal quick attach on canopy models and the hydraulic universal quick attach on cab models. A 270-degree

*Continued...*

### Quick specs

Model	Horsepower	Bucket breakout force	Lift-arm breakout force
TL11R3	107.3 HP @2,600 rpm	7,958 lbs.	7,126 lbs.



Takeuchi's TL11R3 compact track loader features new electric-over-hydraulic (EH) controls for greater precision in loader arm, bucket and travel speed operation.

# TL11R3 provides excellent floatation, traction and stability

... continued

rearview camera comes standard on the high-flow configuration and is optional on the standard-flow configuration.

Built with the robust durability that defines the Takeuchi brand, the TL11R3 has an operating weight of 11,650 pounds (canopy model), a rated operating capacity (ROC) of 2,735 pounds and a bucket breakout force of 7,958 pounds. Its radial-lift boom design is engineered to deliver superior breakout forces for exceptional lifting power with fewer moving parts, making it particularly well suited for grading and dirt work. Rugged steel construction and a one-piece, purpose-built, fully welded frame offer greater strength and rigidity while protecting the engine and hydraulics. With a 12.4-inch ground

clearance, the TL11R3 provides excellent floatation, traction and stability for navigating on challenging terrain with ease. The machine's undercarriage features heavy-duty sealed rollers with metal face seals to keep dirt and debris out, while double-reduction planetary drives and 18-inch tracks deliver powerful tractive effort.

## Six-way adjustable seat for greater comfort

Inside the TL11R3, operators will find a six-way adjustable, high-back suspension seat and an 8-inch touchscreen display for real-time machine vitals and visibility to the rearview camera, as well as access to Bluetooth radio, HVAC controls and other machine functions. The track loader can operate whether its overhead roll-up door is open or closed, regardless of the loader arm position. A lockable hood, steel rear door and integrated bumper protect vital engine components, with the rear door also providing access to a swing-out cooling module for easy cleaning and inspection. The TL11R3's 107.3-horsepower engine meets Tier 4 Final emissions standards with a DOC, DPF and SCR aftertreatment system.

Takeuchi's Fleet Management (TFM) telematics system is standard on the TL11R3 for five years. TFM reduces downtime and controls costs by providing owner/operators with machine health and condition, run time (hours) and machine location, as well as remote diagnostics, scheduled maintenance reminders and customizable alert settings. TFM also gives owners the ability to geofence their machines, helping them protect and secure their investments.

---

***"We listened to our customers and designed the TL11R3 with features that make it one of the most capable, durable track loaders available on the market today."***

*– Dylan Freeman,  
Product Manager,  
Takeuchi-US*

---

"We believe the TL11R3 offers the perfect blend of power, durability and operator comfort to tackle even the toughest projects," said Freeman. "We listened to our customers and designed the TL11R3 with features that make it one of the most capable, durable track loaders available on the market today. It's ready to work whenever you are." ■



The new Takeuchi TL11R3 compact track loader offers the perfect blend of power, durability and operator comfort to tackle even the toughest projects, according to Dylan Freeman, Product Manager, Takeuchi-US.

# The original construction broom company



## Broce Broom

With a wide range of options, Broce Brooms are versatile enough to handle nearly any sweeping challenge. From optional curb sweepers and water spray systems to scraper blades and a choice of engines, you can customize your Broce Broom to meet individual job site needs.

All self-propelled Broce Brooms have a standard hydrostatic drive and a compact wheel base for better maneuverability in tight places. Our sound-suppressed cab provides maximum operator comfort and visibility for optimal productivity and safety.

To find out how Broce Brooms can help you make a clean sweep every time, contact your local Power Equipment branch for a demonstration.

**POWER**  
EQUIPMENT **THE POWER TO PERFORM**

### KNOXVILLE

3300 Alcoa Highway  
Knoxville, Tennessee 37920  
(865) 577-5563  
1-(800) 873-0961

### CHATTANOOGA

4295 Bonny Oaks Drive  
Chattanooga, Tennessee 37406  
(423) 894-1870  
1-(800) 873-0963

### NASHVILLE

320 Waldron Drive  
La Vergne, Tennessee 37086  
(615) 213-0900  
1-(800) 873-0962

### MEMPHIS

3050 Ferrell Park Cove  
Memphis, Tennessee 38116-3502  
(901) 346-9800  
1-(800) 873-0965

### KINGSPORT

1487 Rock Spgs. Road  
Kingsport, Tennessee 37664  
(423) 349-6111  
1-(800) 873-0964

### TUPELO

1545 Highway 45  
Saltito, Mississippi 38866  
(662) 869-0283  
1-(800) 873-0967

[www.PowerEquipCo.com](http://www.PowerEquipCo.com)

# A clear picture of your projects

## Komatsu's cloud-based 3D Smart Construction Dashboard helps contractors turn jobsite data into daily action

**K**omatsu's Smart Construction Dashboard is giving contractors a clear picture of their projects by merging 3D design files, aerial mapping and intelligent machine control data into a single, easy-to-use solution. Designed for daily use by operations teams, Smart Construction Dashboard offers near-real-time visibility into jobsite conditions, supporting efficient decision-making and accurate project control.

At its core, Smart Construction Dashboard helps contractors understand where they are today, so they can make informed decisions about where they want to be tomorrow. By combining multiple 3D data streams, users can confirm quantities, monitor progress, and reduce the guesswork that can surround earthwork and site development.

Features and benefits include:

- **Real-time, integrated 3D jobsite view**  
The dashboard combines 3D design data, drone mapping and machine as-built

information, allowing users to spin, rotate and manipulate a model of the entire site. No specialized hardware or software is required, and collaborators can log in from anywhere.

- **Fast and accurate quantity calculations**  
Whether verifying a pre-bid topo map or evaluating daily production, the system is designed to make volumetric measurements simple. Users can outline a stockpile with a few clicks to quickly calculate volume, density/mass or assigned value. Cut/fill calculations are equally fast, with options to compare the initial survey versus the design, today versus the design or any day in between.
- **Color-coded cut/fill visualizations**  
Smart Construction Dashboard automatically generates industry-standard color maps to highlight material movement. These grids can be downloaded, emailed or printed, helping teams communicate progress and provide documentation for reporting or change orders.
- **Timeline-based project progress tracking**  
A playback feature lets teams review jobsite development through time, using whole-site views, cross-sections and measurement snapshots. With drone data layered in, progress becomes visually obvious and simple to confirm.
- **Enhanced documentation and accountability**  
High-resolution aerial data captured throughout the project helps contractors document site conditions, support change order requests and maintain complete records for clients and stakeholders.
- **Advanced site management**  
The 3D viewer, fed by drone and machine data, gives project managers a complete view of the jobsite. This helps teams identify issues early, coordinate effectively and maintain tight control over daily operations.

The platform is backed by Komatsu-trained Smart Construction and Technology Solution Experts who offer coaching before, during and after deployment. Support includes operator training and guidance to help project managers navigate digital transformation. ■



Komatsu's Smart Construction Dashboard helps users confirm quantities, monitor progress, and reduce the guesswork that can surround earthwork and site development.

# Showstopping solutions

## SENNEBOGEN highlights innovation and technology across multiple machines at CONEXPO-CON/AGG 2026

**S**ENNEBOGEN used CONEXPO-CON/AGG 2026, North America's largest construction trade show, as a major platform to showcase new machines and technology focused on efficiency, stronger performance and enhanced operator comfort, including its 360 G, 830 R-HDD and 718 E models.

The SENNEBOGEN 360 G is a heavy-duty industrial telehandler engineered for demanding material handling, recycling and industrial loading applications. Built to combine the lifting versatility of a telehandler with the breakout force of a wheel loader, the 360 G delivers up to approximately 13,200 pounds of lifting capacity and a maximum lift height of nearly 28 feet.

Powered by a 165-horsepower diesel engine, the machine features powerful hydraulics, Z-kinematics loader technology and responsive controls for fast, efficient cycle times. Its elevating Multicab raises the operator to an eye level of nearly 14 feet and provides full 360-degree visibility for improved precision and jobsite safety when working around trucks, containers and stockpiles. The hydraulic quick-coupler system allows fast attachment changes for buckets, pallet forks and specialized tools, making the 360 G a versatile solution for recycling yards, sawmills, bulk material operations and industrial facilities.

### Purpose-built demolition

The SENNEBOGEN 830 R-HDD is a purpose-built heavy-duty demolition and material handling machine engineered for demanding scrap, recycling and industrial applications. Built with reinforced construction and a rugged undercarriage, the 830 R-HDD delivers exceptional durability and stability in high-impact environments.

The machine combines powerful hydraulic performance with precise multifunction control for handling grapples, magnets, shears and other heavy attachments. The 830 R-HDD has the strength needed for continuous-duty operation, and its advanced hydraulic system delivers fast cycle times and responsive attachment control. The elevating operator cab improves visibility into trailers,

shredders and processing areas, helping increase productivity and jobsite safety.

### Powerful tree management

The SENNEBOGEN 718 E delivers powerful performance for utility, forestry and right-of-way applications where reach, visibility and safety are critical. Designed for demanding tree care operations, the 718 E features a telescopic boom with up to 43 feet of reach, allowing operators to safely handle trimming, removals and debris management from a greater distance. Its elevating Maxcab raises up to a height of 18 feet and tilts 30 degrees, providing exceptional visibility into the work zone for increased precision and operator confidence. Heavy-duty guarding and stable handling help maximize productivity while reducing crew exposure in hazardous tree removal applications.

Powered by a 160-horsepower diesel engine, the machine combines strong hydraulic performance with smooth multifunction operation for attachments such as grapple saws, shears and mulchers. Available in wheeled or crawler configurations, the 718 E offers excellent maneuverability in urban environments, along roadsides and near utility corridors. ■



During CONEXPO-CON/AGG, SENNEBOGEN spotlights a variety of machines to fit multiple applications, including its 360 G, 830 R-HDD and 718 E models.

# Inside Komatsu's Quarry Days

Komatsu showcases an expanding lineup of purpose-built quarry and mining equipment and digital tools designed to elevate efficiency and performance

**K**omatsu's 2025 Quarry Days brought together customers from across North America for hands-on equipment operation, product demonstrations, and in-depth conversations about the company's latest quarry and mining solutions. Held at Komatsu's Arizona Proving Grounds in the desert outside Tucson, the event showcased how machine design, technology and dealer support come together to deliver production-focused results in real-world conditions.

"We bring customers up on the hill, give them a quick tour of everything you can do here and get them operating," stated Robert Hussey, Product Manager for Production Bulldozers, Komatsu.

For many attendees, the draw was the opportunity to run machines outside their

day-to-day fleet mix, and learn directly from Komatsu product managers and experts. That firsthand experience remains the central purpose of Quarry Days, which began in 2019 and has grown into an annual company event.

---

***"This is a great opportunity for us to get to see some new equipment that we haven't been around before."***

*- Scott Beeks,  
Construction Manager,  
APAC*

---

"This is a great opportunity for us to get to see some new equipment that we haven't been around before," commented Scott Beeks, Construction Manager, APAC. "Every person out here explaining the equipment is passionate about their job. We're big fans



Watch the video





▶ **VIDEO**

Quarry Days attendees check out the new Komatsu PC220LCi-12 intelligent machine control (IMC) 3.0 excavator.

of Komatsu, but what really sets it apart is the service and support we receive.”

Hands-on evaluations extended across the full lineup, from the new PC220LCi-12 intelligent machine control (IMC) 3.0 excavator to the WA700-8 wheel loader and HD605-10 mechanical truck. Guests tested capabilities, learned about safety improvements and experienced operator comforts. For Jesse Jones of Turner Mining Group, the chance to operate the WA700-8 stood out.

“It’s almost as if the WA700 is a carbon copy of the WA900, which I’ve run before,” noted Jones. “It’s fast, it’s quick, and it’s got real digging power behind it. Quarry Days is something I’ve never experienced, and I’m loving it. The 10-year-old kid in me is going nuts. It’s really cool to see everything that’s going on out here, especially at a young age getting into this type of industry, and I would recommend it to anybody.”

**Technology and partnerships**

Technology played a major role in the event as well. Komatsu equipped its WA700-8, WA900-8 and HD605-10 with Smart Quarry Site. This real-time data platform lets operators and

*Continued...*



Power Equipment Company’s Corey Shumpert (right) shows Tinsley Limestone’s Malcolm Bennett around Quarry Days.

# 'We've had really great conversations'

... continued

managers view production metrics, load counts, idle time and other performance indicators while equipment runs in the field.

Komatsu's partnerships were also highlighted, including Montabert and Pronto. Montabert showcased its V47 hammer, which Hussey noted pairs well with a Komatsu PC360LC excavator.

---

***"We've had so many customers come in to learn about our products and services, and we've had really great conversations while staying safe and showing them the value of what we can offer."***

*- Robert Hussey,  
Product Manager for Production Bulldozers,  
Komatsu*

---

Hussey added, "We did a live demonstration of Komatsu Smart Quarry Autonomous, powered

by Pronto, a system that integrates their autonomy technologies into quarry-sized haul trucks and ties into our Smart Quarry solutions. We're so happy with our partnership and the solutions that we can show the market here today at Quarry Days."

## **Thanks for attending**

As Quarry Days came to a close, Product Marketing Manager Sebastian Witkowski expressed his gratitude to everyone who attended the event: "It really means a lot to us for our customers to give their time up to come and try our equipment. We really appreciate it."

Hussey concluded, "We've had so many customers come in to learn about our products and services, and we've had really great conversations while staying safe and showing them the value of what we can offer." ■

*\*The opinions expressed here are based on the customer's specific experience. Results may vary.*



**POWER**  
EQUIPMENT

Sales  
Parts  
Service  
Rentals

Call  
Power  
Equipment  
for more  
information.

Chattanooga, TN  
(423) 894-1870

Kingsport, TN  
(423) 349-6111

Knoxville, TN  
(865) 577-5563

Memphis, TN  
(901) 346-9800

Nashville, TN  
(Komatsu Only)  
(615) 213-0900

Tupelo, MS  
(662) 869-0283

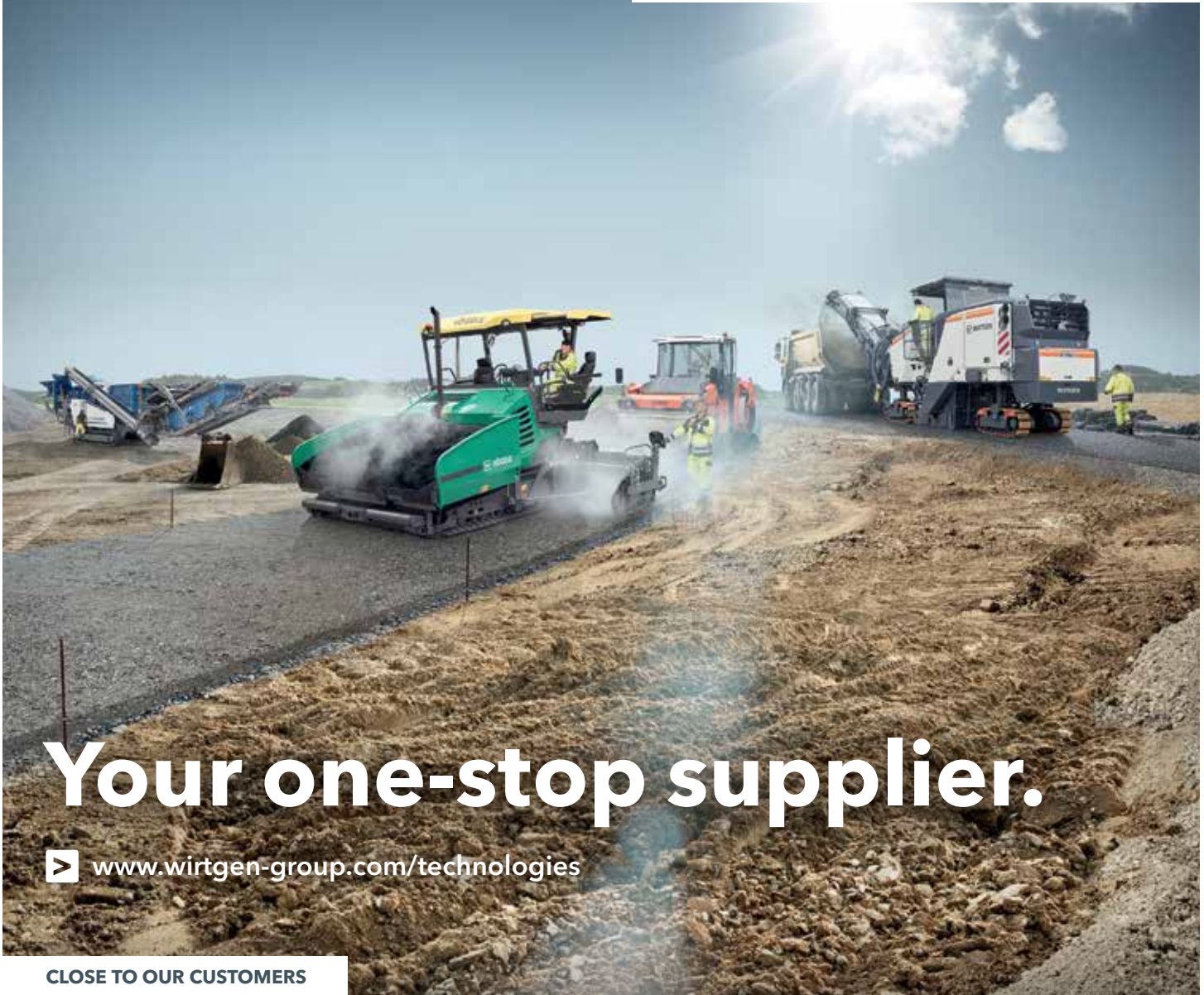
Little Rock, AR  
(501) 823-4400

Springdale, AR  
(479) 927-1672

PowerEquipCo.com

# The power to improve productivity





# Your one-stop supplier.

▶ [www.wirtgen-group.com/technologies](http://www.wirtgen-group.com/technologies)

CLOSE TO OUR CUSTOMERS

**ROAD AND MINERAL TECHNOLOGIES.** With leading technologies from the WIRTGEN GROUP, you can handle all jobs in the road construction cycle optimally and economically. Put your trust in the WIRTGEN GROUP team with the strong product brands WIRTGEN, VÖGELE, HAMM, KLEEMANN.

▶ [www.wirtgen-group.com](http://www.wirtgen-group.com)

WIRTGEN



VÖGELE



HAMM



KLEEMANN



[www.PowerEquipCo.com](http://www.PowerEquipCo.com)

**KNOXVILLE**

3300 Dozer Lane  
Knoxville, Tennessee 37920  
(865) 577-5563  
1-(800) 873-0961

**MEMPHIS**

3050 Ferrell Park Cove  
Memphis, Tennessee 38116-3502  
(901) 346-9800  
1-(800) 873-0965

**CHATTANOOGA**

4295 Bonny Oaks Drive  
Chattanooga, Tennessee 37406  
(423) 894-1870  
1-(800) 873-0963

**KINGSPORT**

1487 Rock Spgs. Road  
Kingsport, Tennessee 37664  
(423) 349-6111  
1-(800) 873-0964

**NASHVILLE**

320 Waldron Drive  
La Vergne, Tennessee 37086  
(615) 213-0900  
1-(800) 873-0962

**TUPELO**

1545 Highway 45  
Saltillo, Mississippi 38866  
(662) 869-0283  
1-(800) 873-0967

# Major upgrades to mini paver

**VÖGELE introduces SUPER 800-5 P mini paver with newly engineered hopper that helps deliver up to 330-ton-per-hour laydown rate**

**V**ÖGELE has launched the SUPER 800-5 P (performance tier), the first mini paver in its Dash 5 generation, bringing a wide range of improvements aimed at boosting operator comfort, visibility and overall jobsite efficiency. Designed for tight and narrow applications, the new machine features a redesigned material hopper, an upgraded operator platform and an enhanced lighting system for safer work in low-light conditions. According to VÖGELE, the upgrades reflect the company's continued commitment to operator-friendly design and reduced setup times across the Dash 5 lineup.

The SUPER 800-5 P succeeds the SUPER 700 and SUPER 800 models, delivering higher performance with an engine output of 74 horsepower and a laydown rate of up to 330 tons per hour. Despite its increased capability, the paver remains compact, measuring approximately 4 feet, 7 inches wide and 14 feet, 5 inches long, making it suitable for confined urban or residential paving tasks. Paired with VÖGELE AB 200 V/TV and AB 220 V/TV extending screeds, the machine supports paving widths ranging from approximately 1 foot, 7 inches to 11 feet, 5 inches, offering flexibility for a wide variety of small-scale projects.

A standout feature of the SUPER 800-5 P is its newly engineered material hopper. As before, each hopper wall can be hydraulically adjusted independently or simultaneously, but the SUPER 800-5 P adds a double-folding mechanism for additional flexibility. Asymmetrical positioning — ideal for paving along a wall or barrier — can now be achieved on either side. The double-folding design, combined with a low hopper height, flat engine hood and raised operator platform, delivers a clear, unobstructed forward view, making both maneuvering and loading significantly easier.

## Updated ErgoBasic 5

VÖGELE has also enhanced operator control with the updated ErgoBasic 5 system that's more ergonomic and flexible. The control console still moves horizontally but now offers four angle adjustments to better match operator height and comfort needs. Although streamlined for the mini paver, the system retains the operating logic of larger VÖGELE

machines, making transitions between models more intuitive.

For the first time on a mini paver, the operator console includes a built-in display for viewing machine operating data. VÖGELE has also integrated control of the Auto Grade Basic automated grade and slope system directly into the screed console, allowing screed operators to manage the entire machine from a single compact station — an efficiency feature previously limited to larger VÖGELE pavers. A new storage layout adds convenience items including a tool and drink holder, coat hooks and a 24-volt outlet for mobile devices.

To improve visibility, the SUPER 800-5 P offers VÖGELE Dash 5 lighting options. The standard Light Package includes LED lighting for the operator console, tow point cylinder and auger tunnel, ensuring shadow-free illumination of critical work areas. The optional Light Package Plus adds two LED floodlights that brighten the full work zone, supporting safe and precise paving after dark. ■



Quick specs			
Model	Horsepower	Laydown rate	Paving widths
SUPER 800-5 P	74 HP	Up to 330 tons/hour	1 ft., 7 in. to 11 ft., 5 in.*

*\*With VÖGELE AB 200 V/TV and AB 220 V/TV extending screeds*

The VÖGELE SUPER 800-5 P mini paver features a redesigned material hopper, an upgraded operator platform and an enhanced lighting system for safer work in low-light conditions.



United. Inspired.

## Powerful team

Working together to support your lineup.

Contact your Power location. We're proud to offer equipment from Epiroc.

**KNOXVILLE, TN** 3300 Dozer Lane  
(865) 577-5563 • (800) 873-0961

**CHATTANOOGA, TN** 4295 Bonny Oaks Dr.  
(423) 894-1870 • (800) 873-0963

**NASHVILLE, TN** (La Vergne) 320 Waldron Dr.  
(615) 213-0900 • (800) 873-0962

**MEMPHIS, TN** 3050 Ferrell Park Cove  
(901) 346-9800 • (800) 873-0965

**KINGSPORT, TN** 1487 Rock Spgs. Rd.  
(423) 349-6111 • (800) 873-0964

**TUPELO, MS** 1545 Hwy 45  
(662) 869-0283 • (800) 873-0967

**POWER**  
EQUIPMENT

# Engineered for extreme durability and precision

## Epiroc launches next-generation PCD drill bits that set a new standard in productivity and tool life with exceptional wear resistance

**E**piroc has unveiled its next-generation PCD (polycrystalline diamond) drill bits that are designed to deliver exceptional wear resistance and longer service life. The new bits are optimized for high-precision drilling in abrasive ground conditions.

The new Epiroc PCD drill bits are the result of extensive research and development (R&D) and testing in collaboration with key customers across multiple continents. With a unique diamond-protected cutting structure and reinforced body design, the bits offer a step-change in service life compared to conventional carbide bits — significantly reducing bit changes, downtime and total drilling cost.

---

***“By extending tool life and improving drilling accuracy, our new Epiroc PCD bits help customers drill smarter, safer and more efficiently.”***

*-Bahadır Ergener,  
Global Business Manager,  
Epiroc Tools Division*

---

By building in-house capability through extensive R&D, Epiroc ensures full control over cost, quality and innovation. This approach allows Epiroc to deliver truly differentiated products, lead the market with exclusive solutions and support customers with technology that is future-proof and aligned with Epiroc’s long-term vision. It’s not just about performance today; it’s about securing productivity and sustainability for tomorrow, according to Epiroc.

“This launch is a major step forward in our mission to drive the productivity and sustainability transformation in our industry,” said Bahadır Ergener, Global Business Manager, Epiroc Tools division. “By extending tool life and improving drilling accuracy, our new Epiroc PCD bits help customers drill smarter, safer and more efficiently.”

The new bits are compatible with a wide range of Epiroc drilling rigs and are available in multiple sizes and configurations to suit various applications in surface mining, underground development and construction drilling.

### Longer drilling intervals

As the mining and construction industries face increasing pressure to improve efficiency and reduce environmental impact, the new PCD technology from Epiroc supports this shift by enabling longer drilling intervals, fewer tool replacements and reduced waste.

Fewer bit changes not only reduce waste and downtime — they also contribute to Live Work Elimination, helping operators avoid unnecessary exposure to high-risk environments and reinforcing Epiroc’s commitment to safety and sustainable productivity.

“This is not just a product upgrade — it’s a performance leap and, in my view, the beginning of a technology shift in the percussive rock drilling industry,” said Fredrik Ternström, Marketing Communication Manager, Epiroc Tools division. “Our customers can expect more meters drilled per bit, better hole quality and lower total cost of ownership.” ■



Epiroc’s next-generation PCD (polycrystalline diamond) drill bits are compatible with a wide range of Epiroc drilling rigs and are available in multiple sizes and configurations to suit various applications in surface mining, underground development and construction drilling.

# Skill, speed and interactions tested

Komatsu's national Advanced Technician Competition put customer uptime front and center as competitors performed inspections and identified issues

In an industry where equipment downtime can halt productivity and drive up costs, technicians play a critical role in keeping operations moving. That reality was on full display at Komatsu's national Advanced Technician Competition (ATC), where top distributor technicians from across North America competed in a rigorous, real-world test of skill.

Held at Komatsu's Cartersville Customer Center in Georgia, the event highlighted the expertise required to maintain and repair machinery. Ten technicians from Komatsu's dealer network took part. More than just a competition, the event underscored Komatsu's commitment to customer service and minimizing downtime, according to Griffin Reome, Director of Technical Workforce Development for Komatsu.

"This competition is an awesome way to showcase the faces behind the iron," said Reome. "Our customers can't live without our field techs, and ATC is one of the best opportunities to highlight their skillset and abilities to diagnose issues and identify fixes. In addition, they were tasked with doing a machine inspection, identifying issues and giving customers recommendations for addressing those."

### Built on real-world challenges

ATC was designed to mirror the realities technicians face in the field. It involved three

stations, each featuring different machines and problem scenarios, all requiring a methodical approach to troubleshooting and repair. Communication also played a central role in the evaluation process, reflecting its importance in the field.

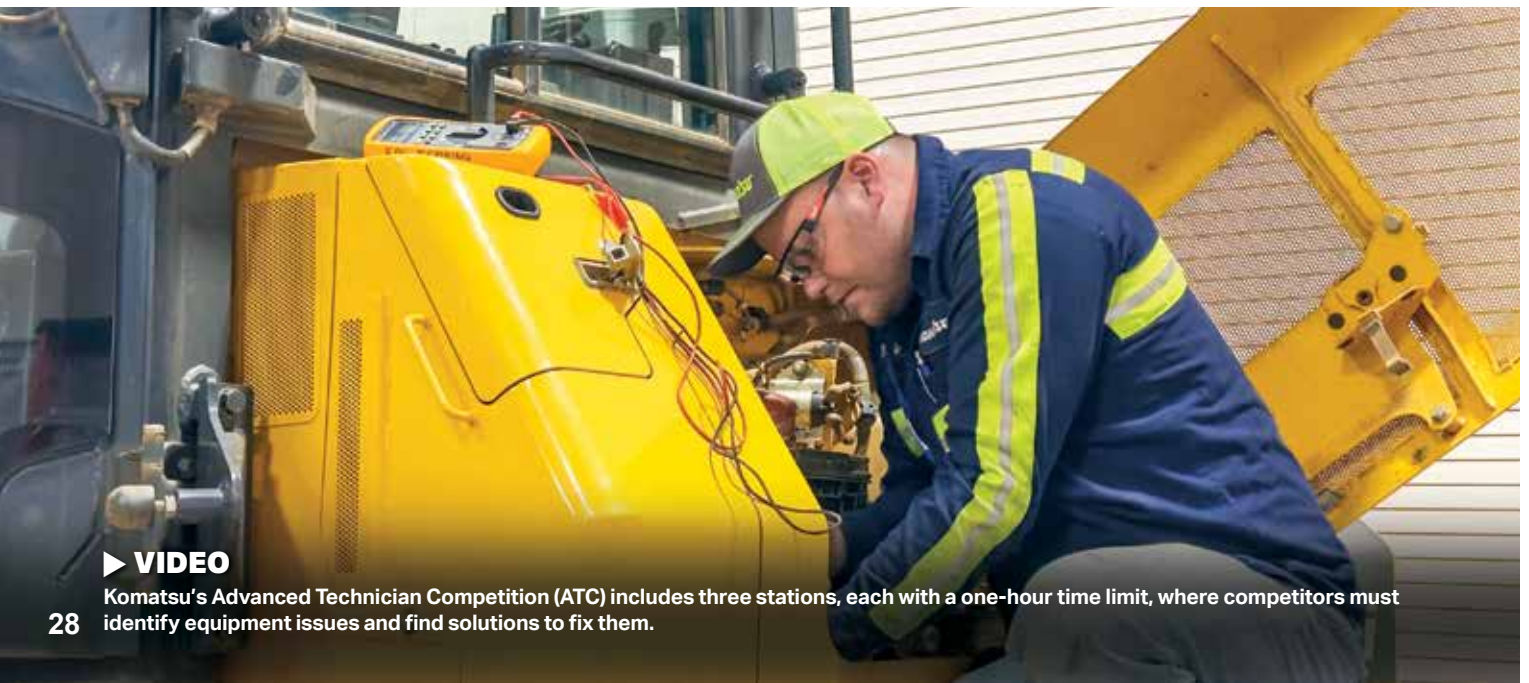
Competitors were given an hour per station to diagnose and resolve issues, with a brief period to familiarize themselves with the equipment before being timed. Komatsu personnel "bugged" a PC220LCi-12 intelligent machine control (IMC) excavator and a D71PXi-24 IMC dozer for the diagnosis stations. An older WA320PZ wheel loader was used for the machine inspection.

Unlike traditional skills competitions, ATC evaluated more than just whether a technician could diagnose and fix a problem. Judges assessed each competitor on a range of criteria designed to reflect a full customer experience. Judges played the role of the customer who had called to have a technician assess the machines' issues and perform the inspection.

"We had very detailed bugs in these machines that the technicians had to strategically, methodically troubleshoot, based on information from the customer, as well as their skills," explained Andrew Earing, Director of Operator and Technical Training, Komatsu. "Communication was extremely important because it was the first line of contact with



Watch the video



### ▶ VIDEO

Komatsu's Advanced Technician Competition (ATC) includes three stations, each with a one-hour time limit, where competitors must identify equipment issues and find solutions to fix them.



Competitors are judged on technical performance, safety, professionalism and documentation.

the customer, who provided background and information that the technician could use to diagnose and fix the issues.”

After the initial discussion with the customer, technicians were tasked with using their expertise, training, service manuals, tools, and other information to resolve the issue. During the inspection, they had to identify any potential issues that could affect the equipment’s performance, and provide recommendations for fixes.

Scoring included:

- Technical performance, for accurate diagnosis and repair
- Safety, confirming proper procedures were followed
- Professionalism, including demeanor and approach
- Documentation, such as correct part numbers and service records

Each winner of the Komatsu ATC received a selection of Komatsu-branded prizes and merchandise. In addition, the top two finishers earned an exclusive “Day in the Life” experience with the opportunity to see how a pit crew operates up close at the upcoming Miami Grand Prix, United States, made possible through Komatsu’s ongoing partnership with the Atlassian Williams F1 Team.

### Reinforcing a commitment to uptime

At its core, the competition highlighted the direct connection between skilled

technicians and customer uptime. Effective maintenance, especially when proactive, helps avoid costly breakdowns and keeps equipment operating efficiently. By simulating real-world service scenarios, ATC reinforced the importance of quick, accurate troubleshooting and clear communication under pressure. It also demonstrated how technicians served as a critical link between Komatsu and its customers, according to Reome.

The return of ATC came at a time when the industry faces an ongoing shortage of skilled labor. Dealers across North America are actively working to recruit and retain qualified technicians, making workforce development a top priority. By reviving the competition, Komatsu aimed to elevate the profession, recognize top talent, and inspire the next generation of technicians.

For participants, ATC was as much about recognition as it was competition. Simply earning a spot among the finalists reflected a high level of skill and dedication.

“ATC aligns with Komatsu’s broader efforts to grow the technician workforce through education partnerships, training programs and career development opportunities,” said Reome. “The number one thing we want them to know is that we’re not successful without them. We hope to continue ATC for a long time to come.” ■

- ① PC360LC-11 demolition
- ② Fully automatic Lehnhoff SQ quick coupler
- ③ Montabert multiprocessor



# Hard to beat. **Easy to transport.**



The Komatsu PC360LC-11 demolition excavator is the ideal straight boom large excavator for tough demolition jobsites. It's also designed with dimensions that make it easier to move from project to project. This excavator is purpose-built with special guarding and other demolition-specific features enabling it to take on unique and challenging worksites. Pair it with a fully automatic Lehnhoff SQ quick coupler system that enables Montabert attachment changes right from the cab, and you have an equipment package that's hard to beat.

Discover more ► [komatsu.com/demolition](https://komatsu.com/demolition)

**KOMATSU**

© 2025 Komatsu Ltd. or one of its subsidiaries. All rights reserved.

**POWER**  
EQUIPMENT

[www.PowerEquipCo.com](http://www.PowerEquipCo.com)

**KNOXVILLE**

3300 Dozer Lane  
Knoxville, Tennessee 37920  
(865) 577-5563  
1-(800) 873-0961

**KINGSPORT**

1487 Rock Spgs. Road  
Kingsport, Tennessee 37664  
(423) 349-6111  
1-(800) 873-0964

**CHATTANOOGA**

4295 Bonny Oaks Drive  
Chattanooga, Tennessee 37406  
(423) 894-1870  
1-(800) 873-0963

**TUPELO**

1545 Highway 45  
Saltillo, Mississippi 38866  
(662) 869-0283  
1-(800) 873-0967

**NASHVILLE**

320 Waldron Drive  
La Vergne, Tennessee 37086  
(615) 213-0900  
1-(800) 873-0962

**LITTLE ROCK**

2801 W 65th Street  
Little Rock, Arkansas 72209  
(501) 823-4400

**MEMPHIS**

3050 Ferrell Park Cove  
Memphis, Tennessee 38116-3502  
(901) 346-9800  
1-(800) 873-0965

**SPRINGDALE**

781 E Randall Wobbe Lane  
Springdale, Arkansas 72764  
(479) 927-1672

Year/Make/Model	S/N	Equipment Number	Location	Hours
<b>Compaction</b>				
2021 HAMM H 10i P	H284.0086	E011461	Louisville, KY	2,235
2021 HAMM H 10i P	H235.2277	E00462	Louisville, KY	2,598
2019 HAMM H 10i P	H235.1525	E011675	Louisville, KY	1,970
2023 HAMM HC 100i P	H252.0066	E010242	Louisville, KY	404
<b>Dozers</b>				
2023 Komatsu D39PXi-24	100965	E009159	Louisville, KY	1,914
2023 Komatsu D39PXi-24	101019	E007921	Louisville, KY	3,142
2023 Komatsu D51EXi-24	B25374	E005369	Louisville, KY	1,013
2024 Komatsu D51PXi-24	B25546	E007903	Louisville, KY	475
2024 Komatsu D51PX-24	16376	E007286	Louisville, KY	982
2023 Komatsu D61PXi-24	45925	E012200	Louisville, KY	2,416
2024 Komatsu D51PX-24	B25665	E007537	Little Rock, AR	2,019
2023 Komatsu D51PX-24	15896	E008685	Nashville, TN	1,163
2022 Komatsu D51PXi-24	15433	E009433	Tupelo, MS	3,984
2018 Komatsu D61EX-24	B60510	PTC1174	Knoxville, TN	5,717
2024 Komatsu D61PX-24	B66800	E005438	Evansville, IN	4,490
<b>Excavators</b>				
2025 Komatsu PC170LC-11	C10110	E010187	Tupelo, MS	132
2024 Komatsu PC360LC-11	A39988	E012211	Louisville, KY	1,426
2018 Komatsu PC210LC-11	A12552	E011792	Bowling Green, KY	5,011
2026 Komatsu PC360LCi-11	A38861	E011791	Bowling Green, KY	2,685
2024 Komatsu PC900LC-11	10020	E010986	Stanville, KY	5,035
2024 Takeuchi TB370CL	170002787	E011795	Little Rock, AR	107
2023 Takeuchi TB290CR	185109693	E009024	Nashville, TN	2,230
2023 Takeuchi TB235-2R	123604816	E011790	Kingsport, TN	394
2025 Komatsu PC290LC-11	C60202	E012374	Little Rock, AR	2,802
2025 Komatsu PC360LC-11	A40652	E012373	Little Rock, AR	1,852
2020 Komatsu PC88MR-10	9163	E009288	Memphis, TN	3,004
2024 Komatsu PC88MR-11	C40611	E008071	Little Rock, AR	1,426
2024 Komatsu PC290LC-11	C60056	E005053	Little Rock, AR	2,600
2025 Komatsu PC490LC-11	A44090	E011532	Louisville, KY	700
<b>Pavers</b>				
2019 VÖGELE 2003-3i	975.0163	E008041	Nashville, TN	4,204
2021 LeeBoy 8520	8520-304105	E004844	Indianapolis, IN	2,995
2020 LeeBoy 8520B	8520-280538	E010101	Chattanooga, TN	2,815
<b>Track Skid Steers</b>				
2023 Takeuchi TL10V2-CRHR	410006825	E008938	Stanville, KY	50
2022 Takeuchi TL10V2-CRH	410005575	E009023	Kingsport, TN	2,227
<b>Wheel Loaders</b>				
2022 Komatsu WA380-8	A75915	E006582	Louisville, KY	7,000
2023 Komatsu WA200-8	88100	E004269	Evansville, IN	5,121
2019 Komatsu WA270-8	A28511	E011793	Bowling Green, KY	3,872
2023 Komatsu WA320-8	A51693	E007435	Nashville, TN	4,570
2023 Komatsu WA475-10	A40370	E012023	Louisville, KY	2,499
2023 Komatsu WA475-10	A40271	E012024	Louisville, KY	5,349





# ***CERTIFIED RENTAL***<sup>®</sup>

Your top choice for **heavy equipment rentals**  
across the South, East, & Midwest!

## **BRANDS INCLUDE**

- Komatsu
- Hamm
- Montabert
- Terramac
- Takeuchi
- & more!



**CALL OUR HOTLINE TO LEARN MORE ABOUT RENTAL OPTIONS!**  
**(800) 997-7530 | CERTIFIEDRENTAL.COM**

# **POWER**

**EQUIPMENT**



**CONTACT YOUR LOCAL  
BRANCH TODAY!**

**CHATTANOOGA, TN**  
(423) 894-1870

**KINGSPORT, TN**  
(423) 349-6111

**KNOXVILLE, TN**  
(865) 577-5563

**MEMPHIS, TN**  
(901) 346-9800

**NASHVILLE, TN**  
(615) 213-0900

**LITTLE ROCK, AR**  
(501) 823-4400

**SPRINGDALE, AR**  
(479) 927-1672

**TUPELO, MS**  
(662) 869-0283



**SCAN TO VISIT  
OUR WEBSITE**