

# POWER

KOMATSU

# EQUIPMENTEER

A publication for and about Power Equipment Company's customers • [www.PowerEquipmenteer.com](http://www.PowerEquipmenteer.com) • Issue 1, 2026

## Byard Construction LLC



## First Star Construction LLC





Andy Moon

## A message from Power Equipment Company

# POWER EQUIPMENT

Dear valued customer,

North America's largest construction trade show — CONEXPO-CON/AGG — just took place in Las Vegas, where more than 2,000 exhibitors showcased the newest equipment and technology across every major construction segment. At this triennial event, Komatsu launched and previewed a broad lineup of machines, engines and digital solutions designed to improve productivity, automation and jobsite connectivity. Check out the recap in this issue to learn about CONEXPO-CON/AGG as well as Komatsu's featured products, including a new HM460-6 articulated truck and a range of Smart Construction solutions.

We also offer an insight into Komatsu's recently introduced PC365LC-11 multifunction plus excavator. Built to deliver more power exactly where it's needed, the machine combines a fully electric swing system, advanced hydraulics and a refined operator environment to help contractors complete jobs faster while significantly reducing fuel consumption and operating costs.

Plus, this issue includes the success stories of our featured customers: Byard Construction LLC and First Star Construction LLC. Both highlight how Komatsu equipment and support from Power Equipment Company help them complete projects efficiently.

Additionally, there are many more valuable articles I think you will enjoy, such as a summary of Komatsu's Demo Days and an overview of My Komatsu Parts 360.

As always, if there is anything we can do for you, please feel free to contact one of our branch locations covering Tennessee, Arkansas, and parts of Virginia and Mississippi.

Sincerely,

Power Equipment Company

A handwritten signature in black ink, appearing to read "Andy Moon", written in a cursive style.

Andy Moon,  
President

## In this issue

### Rooted in community pg. 4

Discover how Byard Construction LLC delivers large-scale infrastructure and residential projects in Tennessee.

### Next-generation jobsites at CONEXPO-CON/AGG pg. 8

Get a recap of CONEXPO-CON/AGG 2026, North America's largest construction trade show.

### Building on solid ground pg. 12

Delve into how First Star Construction LLC is shaping northwest Arkansas with efficient, dependable sitework solutions.

### Engineered for multifunction applications pg. 16

Check out the Komatsu PC365LC-11 multifunction plus excavator.

### Building connections on the course pg. 18

Read about ABC Arkansas' Northwest Arkansas Golf Tournament.

### Wide spectrum of tasks with versatile mill pg. 20

Take a look at the WIRTGEN W 210 XF large milling machine.

### Work smarter, not harder with TFM pg. 23

Learn about Takeuchi Fleet Management.

### Demo Days pg. 24

Explore Fall Demo Days 2025.

### Justin Kiser promoted pg. 28

Meet Justin Kiser, who was recently added to Power Equipment Company's senior leadership team.

### New AEM study unveiled pg. 28

Understand the Association of Equipment Manufacturers' new study, "From Source to Solution: Advancing Water Stewardship in the Non-Road Sector."

### My Komatsu Parts 360 pg. 30

See My Komatsu's newest enhancements.

## Leadership Team

**Andy Moon,**  
President

**Shawn Robins,**  
Vice President,  
Product Support

**Tim Hancock,**  
General Manager,  
Credit & Finance

**Mike Luster,**  
Vice President,  
Regional Sales Manager  
(Nashville)

**Darryl Thompson,**  
Vice President,  
Regional Sales Manager  
(Memphis, Tupelo)

**Justin Kiser,**  
Vice President,  
Regional Sales Manager  
(Knoxville, Kingsport, Chattanooga)

**Tim Hooper,**  
Regional Manager,  
Northwest Arkansas

**Brian Bourne,**  
Regional Sales Manager,  
Central and South Arkansas

**Aaron Kiser,**  
Corporate Rental Sales Manager

**Steve Woodby,**  
Corporate Sales Administration  
and Inventory Manager

**Bill Warr,**  
General Product Support Manager  
(ETN)

**Billy Ham,**  
General Product Support Manager  
(Little Rock)

**Wayne White,**  
General Product Support Manager  
(Nashville, Memphis and Tupelo)

**Jami Frank,**  
Senior Marketing Specialist

### Chattanooga, TN

4295 Bonny Oaks Drive  
(423) 894-1870  
(800) 873-0963

### Kingsport, TN

1487 Rock Springs Road  
(423) 349-6111  
(800) 873-0964

### Knoxville, TN

3300 Dozer Lane  
(865) 577-5563  
(800) 873-0961

### Memphis, TN

3050 Ferrell Park Cove  
(901) 346-9800  
(800) 873-0965

### Nashville (La Vergne), TN

320 Waldron Drive  
(615) 213-0900  
(800) 873-0962  
Drill Sales: (615) 641-3000

### Tupelo (Saltillo), MS

1545 Highway 45  
(662) 869-0283  
(800) 873-0967

### Little Rock, AR

2801 W. 65th Street  
(501) 823-4400

### Springdale, AR

781 E. Randall Wobbe Lane  
(479) 927-1672

# Rooted in community

## Byard Construction keeps its focus local, delivering large-scale infrastructure and residential projects that drive progress across Montgomery County



Chad Byard,  
Chief Manager

In 1995, Chad Byard's father set out to enjoy retirement after decades spent working in construction. Instead, he launched a new chapter and laid the groundwork for his own construction company, Byard Construction LLC.

"My dad started with one backhoe and a pickup truck," recalled Chief Manager Chad Byard. "It was just him and one man, and I came home from college that same year to help him. He thought he was retiring, but we just kept growing from there."

Byard Construction began as a small utility company but quickly expanded to handle a full range of civil construction services.

The company now operates across Montgomery County, Tennessee, with 185 employees and more than 200 machines.

"We don't really say we specialize in one thing," Byard said. "If you want a site fully graded from start to finish, that's what we do. We can handle everything from grading and utilities to asphalt and turnkey projects."

That versatility allows the company to maintain control of each phase of a project and deliver consistent results.

"We make the asphalt, we lay it, we pour concrete," Byard explained. "Really, we do whatever it takes to complete the job from start to finish. We use subs occasionally when we need to, but we primarily focus on completing as much work as we can through ourselves."

---

***"If you want a site fully graded from start to finish, that's what we do. We can handle everything from grading and utilities to asphalt and turnkey projects."***

*- Chad Byard,  
Chief Manager,  
Byard Construction LLC*

---

### Customer snapshot

**Company:** Byard Construction LLC

**Location:** Clarksville, Tennessee

**Established:** 1995

**Employees:** 185

**Areas of expertise:** Full-service civil construction, including grading, utilities and asphalt paving, and turnkey site development projects

**Komatsu equipment:** PC160LC, PC170LC, PC210LC, PC350LC and PC360LC excavators; PC210LCi IMC excavator; WA200 wheel loaders; GD655 motor grader; D39EX and D51EX dozers; D61PXi IMC dozer

**Komatsu technology:** Intelligent machine control (IMC)

An operator utilizes a Komatsu PC210LCi intelligent machine control (IMC) excavator to cut material to grade and load a truck.

### ▶ VIDEO



### Staying local

Over three decades, Byard Construction has helped build numerous projects throughout Clarksville. The company remains firmly planted in the community, completing a majority of its projects in and around the city.

"We work hard to stay local," Byard stated. "Clarksville has grown tremendously, and we've grown right alongside it. We could travel if we wanted to, but we prefer to work in our own backyard and be home every night."

Focusing on local work has helped Byard build relationships and trust across the community, leading to numerous opportunities on larger projects.

"We're doing a lot of public sector work for the city of Clarksville right now," Byard noted. "We're helping with their transportation 2020 initiative, widening roads and paving city streets. On the private side, we've got several large residential developments underway that keep our grading and utility crews busy year-round."



The Komatsu GD655 motor grader helps Byard Construction reach grade with precision.

### Right equipment

Equipment has always been central to Byard Construction's success. The company relies heavily on Komatsu machinery, supported by Power Equipment Company and Territory Manager Matthew Spence.

"We have quite a few Komatsu PC360 excavators and WA200 wheel loaders," Byard shared. "Those machines are the backbone of our utility and grading divisions. Our operators run them every day, and they've proven to be fast, reliable and efficient."

One of the company's most trusted tools in recent years has been the Komatsu GD655 motor grader.

---

***"Travis is Johnny-on-the-spot. He's outstanding with response times and has lots of knowledge about the equipment."***

*- Chad Byard,  
Chief Manager,  
Byard Construction LLC*

---

"That grader has been a great addition," Byard declared. "It's dependable, we haven't had any problems, and it fits perfectly into our day-to-day operations."

The company also utilizes a range of Komatsu dozers, such as the D51EX and D61PXi models. The D61PXi dozer utilizes intelligent machine control (IMC) technology to stay on grade with GPS precision.



Using a Komatsu D61PXi IMC dozer, an operator cuts material to grade.

### Trusted partnership

Power Equipment's support extends well beyond sales. The dealership helped Byard Construction expand into paving with HAMM rollers and continues to deliver reliable field service through Customer Support Representative Travis Veatch.

"Travis is Johnny-on-the-spot," Byard commented. "He's outstanding with response times and has lots of knowledge about the equipment. I don't know what we'd do without him."

For Byard, those long-term relationships are vital to success. Power Equipment has been part of the company's story since its early



Discover more at  
[PowerEquipment.com](http://PowerEquipment.com)

*Continued...*

# 'I couldn't ask for a better salesman'

... continued

days, beginning with his father's friendship with salesman Bill Conder.

"We've been buying Komatsu equipment from Power Equipment for 30 years," Byard said. "We've had different reps along the way, but Matthew's been fantastic. He's knowledgeable, quick with quotes, and always calls me when there's a deal or new financing option. I couldn't ask for a better salesman."

Byard believes that support, not just the iron itself, separates good partnerships from great ones.

"The machines today can all do the work, but it's the service, the warranty and the way your

dealer helps you that makes the difference," Byard emphasized. "Power Equipment has always stepped up when times got tough, and that's what keeps us coming back."

---

***"Power Equipment has always stepped up when times got tough, and that's what keeps us coming back."***

*- Chad Byard,  
Chief Manager,  
Byard Construction LLC*

---

## By the numbers

- 200+ machines in operation
- 30-year relationship with Power Equipment Company



An operator transports material with a Komatsu WA200 wheel loader.

An operator loads stone into the bed of a truck with a Komatsu PC360LC excavator.



## Ready for the next generation

That dependability has helped Byard Construction thrive for three decades and sets the stage for a strong future. The third generation is already getting involved.

"My oldest son, Tyler, just graduated from Auburn and is working here now in project management," Byard said proudly. "My youngest, Colby, is at the University of Tennessee and already loves the asphalt side of the business. They've both been around equipment since they were kids."

Byard added that working alongside his sons brings the company full circle. From his father's backhoe in 1995 to a third generation leading the way forward, the company continues to thrive on a family atmosphere.

"It's special," Byard reflected. "I got to learn from my dad, and now my sons are teaching me new things — especially with technology. They pick it up fast, and it's exciting to see where they'll take it next." ■

*\*The opinions expressed here are based on the customer's specific experience. Results may vary.*



WORK  
AT THE  
SPEED OF

**INSTINCT.**



**KEY FEATURES:**

- EH CONTROLS
- 107.3 HP ENGINE
- KEYLESS START
- STEERING DRIFT ADJUSTMENT
- SELF-LEVEL UP AND DOWN<sup>1</sup>

<sup>1</sup>Up: Standard. Down: Included with optional angle sensor.

Buried lines. Tight deadlines. Zero room for error. Takeuchi's new **TL11R3 Compact Track Loader** meets you with surgical precision thanks to electric-over-hydraulic (EH) controls that move when you move. Adjust for drift. Stay level on the lift. Power through with 107.3 hp that's steel-built to take a beating and match your pace, move for move. This isn't just control — it's second nature.

**POWER**  
EQUIPMENT

[www.PowerEquipCo.com](http://www.PowerEquipCo.com)

SCAN THE CODE TO LOAD  
UP ON ALL THE DETAILS  
[TL11R3.COM/UTILITY](http://TL11R3.COM/UTILITY)



**TL11R3**

**takeuchi**

THE MARK OF TOUGHNESS

# Next-generation jobsites at CONEXPO-CON/AGG

Technology and automation led the conversations as 140,000-plus attendees met at North America's largest construction trade show

The global construction industry gathered in force in Las Vegas as CONEXPO-CON/AGG 2026 brought more than 140,000 professionals from 128 countries together to explore the technologies, equipment and ideas shaping the future. Held at the Las Vegas Convention Center and nearby festival grounds, the triennial event once again served as North America's largest construction trade show and a central marketplace for a \$2.2 trillion U.S. industry.

Spanning more than 3 million square feet of exhibit space and featuring more than 2,000 exhibitors, the event showcased equipment, digital technologies and services across every major construction segment. Massive earthmoving machines, cranes and paving systems stood alongside connected jobsite platforms, automation solutions and sustainability-focused innovations. Contractors, manufacturers and technology leaders gathered to evaluate equipment, forge partnerships, and conduct business that will influence projects and infrastructure development going forward.

"CONEXPO-CON/AGG is where the construction industry comes to see what's next," said CONEXPO-CON/AGG Show Director Dana Wuesthoff. "This week demonstrated the resilience and ingenuity of our industry.

From advanced machinery to digital tools that help crews work safer and smarter, the innovations unveiled here will shape jobsites for years to come."

## Komatsu showcases solutions

Komatsu launched and previewed a broad lineup of machines, engines and digital solutions designed to improve productivity, automation and jobsite connectivity.

---

**"CONEXPO-CON/AGG is where the construction industry comes to see what's next."**

*- Dana Wuesthoff,  
Show Director,  
CONEXPO-CON/AGG*

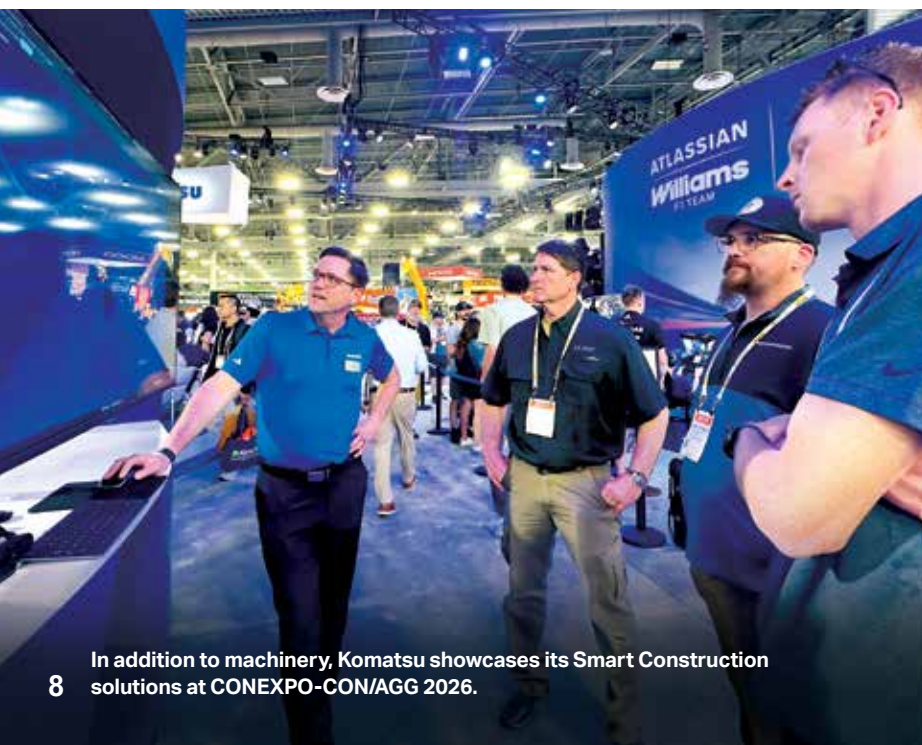
---

"At CONEXPO, our goal is to give customers a clear sense of where Komatsu is headed — showcasing new machines, next-generation technology, and integrated solutions that will drive productivity, simplify maintenance, and shape the future of their operations," stated Paul Moore, Vice President of Products, Marketing and Service for Komatsu North America.

Among the machines featured was the new HM460-6 articulated truck with an increased payload capacity of 46.3 tons and an overall machine weight that has been reduced by roughly 6,600 pounds compared to the HM400-5. Combined with a new nine-speed transmission, locking axles and traction control systems, the truck is designed to shorten haul cycles while lowering fuel consumption.

"We increased production, reduced the weight of the truck, and added a new engine and transmission. It all works together as a system to deliver faster cycle times and higher productivity," explained Bruce Boebel, Director of Products and Services for Komatsu's construction division, noting that the HM460-6 is powered by Komatsu's new DBA127 engine, a 12.7-liter powerplant designed to simplify emissions systems while extending service intervals, including a diesel particulate filter exchange interval of up to 8,000 hours.

Komatsu highlighted the first in its -12 series excavator platform, the PC220LC-12, which features a wider cab, customizable electro-hydraulic controls and advanced



In addition to machinery, Komatsu showcases its Smart Construction solutions at CONEXPO-CON/AGG 2026.



► VIDEO

Attendees check out a wide variety of the latest equipment, including Komatsu's new PC220LCi-12 excavator with intelligent machine control (IMC) 3.0 technology.

operator interfaces. The PC220LCi-12 intelligent machine control (IMC) model integrates new automation tools in IMC 3.0, such as swing-to-line and travel-along-line, enabling operators to maintain trench alignment and automatically reduce repetitive manual adjustments.

Komatsu also showcased its recently launched PC365LC-11 multifunction plus excavator with an electric swing system that captures and reuses energy generated during swing braking. The system stores recovered power and redistributes it during operation, improving cycle times and fuel efficiency during demanding tasks such as truck loading and trenching.

Additional currently available machines on display included WA485-11, WA475-11, WA380-8 and WA700-8 wheel loaders, each built to deliver dependable performance and efficiency across various applications. The WA485-11, WA475-11 and WA380-8 work well in construction and quarry applications, while the larger-capacity WA700-8 is built for surface mining.

Komatsu also gave attendees a preview of machines set to launch in the near future, including a PC158USLCi-12 excavator equipped

with the latest IMC 3.0 system. The 15-ton class excavator will be the first tight-tail model in its size category to offer factory-installed IMC, bringing advanced automation features to utility, highway and urban construction work where compact machines are common.

Komatsu offered show attendees an exclusive preview of two next-generation crawler dozers engineered to advance productivity and efficiency in earthmoving applications from site development and road construction to mining. The D61PXi-25 dozer with IMC 3.0 and the D175AX-10 large production dozer represent the next phase in Komatsu's evolution of powertrain performance, operator-centered design and integrated technology.

Alongside its machines, Komatsu emphasized digital jobsite solutions under its Smart Construction ecosystem. New tools demonstrated at the show included:

- **Smart Construction Dashboard Mobile** — a smartphone-based version of its jobsite visualization platform
- **Smart Construction Edge** — a base station for on-site drone data processing
- **Smart Construction Fleet Lite** — basic payload tracking



Watch the video

# Smart Construction highlighted at CONEXPO-CON/AGG

... continued

- **Smart Construction Home** — a homepage for projects, displaying jobsites on a map with key metrics such as job completion percentage
- **Smart Construction Whiteboard** — a digital dispatch tool modeled after traditional office whiteboards that allows users to drag and drop machines and labor onto jobsite columns
- **3D Machine Guidance Flex** — a GPS-based guidance system designed for a wider range of machines including trucks, loaders and scrapers

---

***“Smart Construction is about more than just building better machines — it’s about connecting those machines with people and processes to optimize the entire jobsite.”***

*- Jason Anetsberger,  
Director of Customer Solutions,  
Komatsu*

---

“Smart Construction is about more than just building better machines — it’s about connecting those machines with people and processes to optimize the entire jobsite,” noted Jason Anetsberger, Director of Customer Solutions, Komatsu. “By combining intelligent equipment with digital planning and 3D control, we help customers eliminate waste, reduce idle time, and ultimately get the most efficiency and productivity out of every move they make.”

Additionally, Komatsu spotlighted its new Smart Quarry Autonomous solution, which uses artificial intelligence, onboard computing and sensor-based perception technologies to navigate mapped haul routes with minimal setup. System configurations are determined based on site requirements and applicable commercial agreements.

Plus, Komatsu featured fleet connectivity through its My Komatsu digital platform, which integrates telematics, parts purchasing, fleet data and predictive maintenance tools into a unified portal designed to help contractors manage equipment and jobsite performance more effectively.

Other highlights included machine and racing simulators that attendees could operate, a replica of the Atlassian Williams Racing Formula 1 car that Komatsu sponsors and partners with, and a company store with Komatsu-branded apparel and accessories.

---

***“We want every visitor to leave our booth excited — not just about the equipment they see today, but about the innovation, digital transformation and long-term partnership Komatsu is building to support their success moving forward.”***

*- Paul Moore,  
Vice President of Products,  
Marketing and Service,  
Komatsu*

---

“We want every visitor to leave our booth excited — not just about the equipment they see today, but about the innovation, digital transformation and long-term partnership Komatsu is building to support their success moving forward,” commented Moore.

## Honoring those who build

One of the CONEXPO-CON/AGG’s most visible moments came during the opening ceremony, when thousands of attendees donned bright orange safety vests for a Guinness World Record attempt for the largest gathering of people wearing high-visibility construction vests. Organizers aimed to surpass the previous record of 2,499 participants, using the moment to emphasize the construction industry’s commitment to safety and its collective impact on infrastructure, transportation networks, energy development, sports venues and civic landmarks across North America.



Attendees have a great time running simulators designed to give an operator’s view from the cab of a machine.



At CONEXPO-CON/AGG 2026, Komatsu introduces its new DBA 127 engine, which powers the new Komatsu HM460-6 articulated truck and will power additional soon-to-be launched machines.

"This record attempt is more than a number — it's a celebration of the advances, hard work, innovation and dedication of everyone in the construction industry," Wuesthoff said. "We want to honor those who build our cities, roads, railways, airports, stadiums and monuments, and highlight how their efforts touch every aspect of society. This record is particularly important to us as safety is and always will be of utmost priority for the industry and the people who make this work possible."

CONEXPO-CON/AGG also served as a forum for thought leadership through 150 educational sessions. On the show's Ground Breakers Stage, experts discussed emerging topics including artificial intelligence in construction, workforce development and infrastructure investment. Workshops focused on small business growth, equipment maintenance and mentorship opportunities for women in construction, reinforcing the industry's emphasis on workforce development.

The scale and influence of CONEXPO-CON/AGG reflect more than a century of industry evolution. The show traces its roots back to 1909, when the original Road Show in Columbus, Ohio, featured just 40 equipment

manufacturers across 40,000 square feet. Today, the event has grown into a global platform for innovation, connecting thousands of companies and professionals shaping the future of the built environment.

---

***"This event continues to elevate the equipment manufacturing industry — amplifying innovation, insight and influence."***

*- Dana Wuesthoff,  
Show Director,  
CONEXPO-CON/AGG*

---

"A century of progress is reflected in CONEXPO-CON/AGG's scale, scope and spirit," Wuesthoff stated. "This event continues to elevate the equipment manufacturing industry — amplifying innovation, insight and influence."

As the 2026 show concluded, organizers emphasized that the relationships formed, deals negotiated and technologies introduced during the week will ripple across construction projects worldwide for many years to come. The next edition of CONEXPO-CON/AGG is scheduled to return to Las Vegas March 13-17, 2029. ■

# Building on solid ground

From residential subdivisions to municipal infrastructure, First Star Construction is shaping northwest Arkansas with efficient, dependable sitework solutions



Solomon Jones,  
General Manager



Marty Stamps,  
General Superintendent  
and Director of  
Field Operations

**F**irst Star Construction was founded in 2019 to support a growing homebuilding operation. What began as a small infrastructure division quickly evolved into a full-scale heavy construction business.

"We started off as an infrastructure company building utilities for the houses we were building at the time," recalled Solomon Jones, General Manager. "We've since gone from self-performing infrastructure for our homebuilding division to branching out into municipal and public work."

Headquartered in Fayetteville, Arkansas, First Star Construction operates out of a nearby shop in Farmington, taking on projects across northwest Arkansas, southwest Missouri and northeast Oklahoma. Its reputation for quality and reliability has made First Star Construction a trusted partner on residential, subdivision and municipal infrastructure projects.

Led by owner Melissa Sims, Chief Operating Officer Ben Young, Director of Construction Eric Predmore and Jones, the company's team has grown steadily and strategically, expanding from a dozen employees to 60. That growth has been intentional, designed to maintain the company's high standards and support new areas of work.

"I wanted to grow at a rate where we could get quality people in here," said Marty Stamps, General Superintendent and Director of Field Operations. "Now that we've brought on folks like Jason Teague and estimator Zach Martin, we're able to stay focused in the field and ensure projects are done right."

Teague, the company's newly hired director of heavy construction, brings more than three decades of industry experience. He said the team's collaborative approach was a major draw.

"Everyone's on the same page here," stated Teague. "It's teamwork — everyone knows what the left hand's doing."

## Customer snapshot

**Company:** First Star Construction LLC

**Location:** Fayetteville, Arkansas

**Established:** 2019

**Employees:** 60

**Areas of expertise:** Site development, underground utilities and municipal infrastructure

**Komatsu equipment:** D51 and D61 dozers; PC360LCi IMC excavator; PC88MR short tail swing excavators; WA270 wheel loaders

**Komatsu technology:** Intelligent machine control (IMC)

---

***"Everyone's on the same page here."***

*- Jason Teague,  
Director of Heavy Construction,  
First Star Construction LLC*

---

## Technology that delivers

That teamwork extends beyond employees to include First Star Construction's partnership with Power Equipment Company. First Star Construction has standardized most of its fleet with Komatsu machines purchased through Power Equipment in recent years, including Komatsu D51 and D61 dozers, a PC360LCi intelligent machine control (IMC) excavator, PC88MR short tail swing excavators, and WA270 wheel loaders.

The company's Komatsu equipment plays a key role in keeping projects on schedule. The Komatsu PC360LCi IMC excavator, for example, pairs with articulated dump trucks to cut subgrade and load material without requiring a grade checker or additional dozer.

"That frees up the dozer for other work instead of using it to continuously check

Using a Komatsu PC360LCi intelligent machine control (IMC) excavator, operators can stay on grade when digging.

▶ VIDEO





An operator pushes out a pile of dirt with a Komatsu D61EX dozer.

the excavator's grade," explained Stamps. "Essentially, having an excavator with GPS technology eliminates the need for an extra machine and employee that we would have previously relied on."

Jones added, "With the IMC machines, you can truly use less labor. You're not checking rovers, stakes or lasers because everything's integrated. It increases efficiency and eliminates errors."

Integrated grade control also reduces wear on external components and protects against damage.

"With the Komatsu machines, you don't have towers or cables hanging off that can be damaged," emphasized Jones. "It's a more durable, streamlined setup that just makes sense."

Operator comfort and reliability are equally important. Superintendent Leon Swicegood said the Komatsu machines have performed consistently under demanding conditions.

"They've held together really well for us," declared Swicegood. "They're powerful, comfortable and dependable. We haven't had many breakdowns, and that's huge."

### Reliable support from Power Equipment

Beyond the machines themselves, First Star Construction credits Power Equipment for its

outstanding support and responsiveness, which are just as valuable as the iron on the ground.

***"They're powerful, comfortable and dependable."***

*- Leon Swicegood,  
Superintendent,  
First Star Construction LLC*

"It's mainly the support from Power Equipment that keeps us coming back to Komatsu equipment," commented Stamps. "The equipment is great, and Power Equipment's support helps us maximize our uptime and keep the equipment on the jobsite. They give us support on the GPS side and on the equipment side. It's a one-stop shop."

Power Equipment's staff members, including Territory Manager Brandon Crawford and Technology Solutions Representative Alan Peck, have earned high praise for their service.

"Brandon's been Johnny-on-the-spot," shared Stamps. "If I need to rent something or have an issue, I've never waited more than 12 hours for a response. They can even link into the machines remotely and fix things within minutes."



**Jason Teague,  
Director of  
Heavy Construction**



**Leon Swicegood,  
Superintendent**



Discover more at  
[PowerEquipment.com](http://PowerEquipment.com)

Continued ...

# 'Power Equipment is a stand-up company'

... continued

"Power Equipment has been excellent to work with," added Jones. "Alan's been an excellent resource with any GPS questions that we may have. Anything on the machine side and

sales side, Brandon's been great to work with. They've even helped with maintenance on some of our other equipment. The response time on parts and service is quick, and that makes a difference."

Teague echoed that sentiment based on his long industry experience.

"Power Equipment is a stand-up company," Teague reflected. "If you need anything, they're right there for you. I've worked with them at previous companies, and it's always been positive."

## Looking ahead

As First Star Construction continues to expand, the company plans to pursue larger infrastructure and highway-related projects while maintaining its foundation in residential and municipal work.

---

***"Power Equipment has been excellent to work with."***

*- Solomon Jones,  
General Manager,  
First Star Construction LLC*

---

"We have over a year and a half of utility and infrastructure work on our current projects," remarked Stamps. "We're also pursuing city street expansions and hope to get into more highway drainage and box culvert work."

That forward-looking mindset has fueled steady growth and positioned First Star Construction for continued success.

"We really try not to let opportunities slip through the cracks," said Jones. "If there's a good project with more behind it, we'll figure out what it takes to make it work — whether that means adding people or equipment."

Ultimately, First Star Construction's success stems from a simple philosophy: invest in the right people, equipment and partnerships.

"At the end of the day, we want to provide the best product possible for our customers," concluded Jones. "There are tons of options out there, but we really try to support the customer more than anything else, provide the expertise, and have the knowledgeable employees and quality equipment to be able to provide the product that the customers are really looking for at a reasonable price." ■

*\*The opinions expressed here are based on the customer's specific experience. Results may vary.*

## By the numbers

- 1 IMC excavator replaced the need for a separate dozer and grade checker, saving both time and labor on every project
- 12 hours or less is the longest the company has waited for dealer service or technical support, keeping uptime consistently high
- 1.5+ years of active utility and infrastructure work is currently on the books



(L-R) First Star Construction's Jason Teague, Solomon Jones, Marty Stamps and Leon Swicegood work closely with Power Equipment Territory Manager Brandon Crawford to find the best equipment and service their machines.

First Star Construction utilizes mini excavators like the Komatsu PC88MR for work in tighter locations.





United. Inspired.

## Powerful team

Working together to support your lineup.

Contact your Power location. We're proud to offer equipment from Epiroc.

**KNOXVILLE, TN** 3300 Dozer Lane  
(865) 577-5563 • (800) 873-0961

**CHATTANOOGA, TN** 4295 Bonny Oaks Dr.  
(423) 894-1870 • (800) 873-0963

**NASHVILLE, TN (La Vergne)** 320 Waldron Dr.  
(615) 213-0900 • (800) 873-0962

**MEMPHIS, TN** 3050 Ferrell Park Cove  
(901) 346-9800 • (800) 873-0965

**KINGSPORT, TN** 1487 Rock Spgs. Rd.  
(423) 349-6111 • (800) 873-0964

**TUPELO, MS** 1545 Hwy 45  
(662) 869-0283 • (800) 873-0967

**POWER**  
EQUIPMENT

[epiroc.us](http://epiroc.us)

[PowerEquipCo.com](http://PowerEquipCo.com)

# Engineered for multifunction applications

## Komatsu PC365LC-11's electric swing system delivers more power, faster cycle times and lower fuel consumption to help boost jobsite productivity

**K**omatsu is bringing a new level of performance and efficiency to large excavators with the introduction of the PC365LC-11 multifunction plus model to the North American market. Built to deliver more power exactly where it's needed, this machine leverages its innovative electric swing system with "boom-up" power assist to deliver up to a 15% increase in productivity and up to a 20% reduction in fuel consumption compared to conventional Komatsu excavators in the same size class. The fully electric swing system, advanced hydraulics and refined operator environment help contractors complete jobs faster while significantly reducing fuel consumption and operating costs.

Designed specifically for demanding multifunction applications, the PC365LC-11 features a refreshed exterior design, an enhanced cab and a suite of standard and optional features optimized for North American construction jobsites.

"The PC365LC-11 was engineered for excellence in multifunction applications by leveraging its innovative electric powertrain system to boost jobsite productivity while reducing fuel consumption compared to conventional Komatsu excavator offerings in this size class," said Matthew Moen, Product Manager, Komatsu. "To highlight these performance enhancements, we're emphasizing the concept of 'multifunction plus' as the defining feature of this machine."

### Enhanced performance and reduced fuel consumption

The PC365LC-11 is the only excavator in its class equipped with a fully electric swing system

with "boom-up" power assist. The PC365LC-11's electric swing motor enhances multifunction performance by delivering faster swing acceleration, reducing cycle times and increasing productivity. Unlike conventional hydraulic swing motors, the PC365LC-11's electric swing motor recovers kinetic energy at the end of each swing and converts it to electricity.

That energy is stored in the Komatsu-designed ultra-capacitor, where it can power the electric swing motor or be directed to the engine-mounted motor-generator. This provides an instantaneous boost of up to 70 additional horsepower to the work equipment by assisting the engine's response from an ultra-low idle speed of 700 RPM. The ultra-low idle state was designed to reduce fuel consumption further — lowering total cost of ownership and minimizing downtime. All electrical energy used by the system is generated during normal machine operation, and there is no need for external charging.

By eliminating the need for hydraulic power for swing operations, full hydraulic flow is now optimally routed to the boom, arm and bucket cylinders — improving digging cycle times, reducing work equipment lag and creating a smoother operation in multifunction applications.

---

***"The PC365LC-11 was engineered for excellence in multifunction applications by leveraging its innovative electric powertrain system to boost jobsite productivity while reducing fuel consumption compared to conventional Komatsu excavator offerings in this size class."***

*- Matthew Moen,  
Product Manager,  
Komatsu*

---

The electric powertrain also contributes to a quieter jobsite. Eliminating hydraulic flow during the swinging motion reduces mechanical noise and vibration, and the ultra-low 700 RPM idle speed operates significantly quieter than the conventional 1,000 RPM low idle. The external noise reduction of 4 dB(A) helps improve the working environment for the operator, nearby crews and others near the jobsite.

Even in the most demanding multifunction applications, these advancements make the PC365LC-11 up to 15% more productive and reduce fuel consumption by up to 20% when compared to the conventional PC360LC/LCi-11



The Komatsu PC365LC-11 multifunction plus excavator delivers more power where it counts with a fully electric swing system, advanced hydraulics and a refined operator environment.



Designed for demanding multifunction applications, the Komatsu PC365LC-11 helps contractors to work faster, quieter and more efficiently, all while lowering total cost of ownership.

#### Quick specs

Model	Horsepower	Operating weight	Bucket capacity
PC365LC-11	269 HP + 70 electric HP	81,791-85,495 lbs.	0.89-2.56 yd <sup>3</sup>

— a rare combination of higher output and greater efficiency.

Compared to the previous model, the PC365LC-11 brings new features and enhancements across three key areas: operator experience, technology and attachment flexibility:

- **Greater operator comfort for long shifts:**

A new standard\*\* premium heated air-suspension operator seat features a high leather back, improved cushioning and multiple adjustments to enhance operator comfort during long working shifts. New standard proportional joysticks provide smooth, variable-speed control of plus one attachments while offering an ergonomic feel, helping reduce operator fatigue and wrist stress.

- **Technology that gets the job done:**

The KomVision camera system comes as standard\*\* and provides a real-time bird's-eye view of the machine and its surroundings to help improve situational awareness that supports Komatsu's mission of zero harm. An optional Smart Construction 3D Machine Guidance kit can be factory-installed, giving operators and managers access to 3D design and topographic data to improve accuracy, manage load volumes and optimize operations.

- **Efficient, fast and versatile attachment operation:**

The tool control system is standard for machine configurations with a plus one hydraulic attachment piping. This empowers operators to configure and store flow rates and target pressures for multiple attachments. Attachment information is displayed on the in-cab monitor interface, enabling quick switching between tools with accurate, preconfigured hydraulic settings. Optional hydraulic quick coupler piping can be factory-installed, saving both time and local installation costs. This piping provides the necessary hydraulic flow and pressure to operate hydraulic quick couplers, such as the Lehnhoff fully automatic symmetric quick coupler.

For added peace of mind, the machine's electric powertrain components are covered by a 7-year/15,000-hour transferable warranty. ■

*\*Statistical claims and comparisons referenced herein are made against conventional Komatsu excavators in the same size class, against the Komatsu PC360LC-11 and PC360LCi-11. New features and enhancements referenced herein from the previous model are compared with those of the Komatsu HB365LC-3.*

*\*\*To be introduced as a running change after model release. Please work with your Komatsu representative if this feature is required.*

# Building connections on the course

## ABC Arkansas' annual Northwest Arkansas Golf Tournament brings contractors, suppliers and industry partners together for a day of camaraderie and support



**Bill Roachell,**  
Chapter President,  
ABC Arkansas



**Tim Hooper,**  
Branch Manager,  
Power Equipment

**T**he Associated Builders and Contractors (ABC) of Arkansas hosted its annual Northwest Arkansas Golf Tournament at Lost Springs Golf & Athletic Club in Rogers, Arkansas. The event drew 50 teams and a full roster of sponsors for a sold-out event that celebrated connection, community and commitment to the construction industry. The daylong tournament featured morning and afternoon flights, food from local favorites like Wright's Barbecue, and plenty of networking opportunities between rounds.

"This is our premier event in Northwest Arkansas," said Bill Roachell, Chapter President for ABC Arkansas. "Last year, we

had 50 teams and sold out in four hours. This year, it sold out in just two hours and 11 minutes. Our people in Northwest Arkansas love golf, they love supporting ABC, and we had a beautiful day and beautiful weather for it."

---

***"Our people in Northwest Arkansas love golf, they love supporting ABC, and we had a beautiful day and beautiful weather for it."***

*- Bill Roachell,  
Chapter President,  
ABC Arkansas*

---



A participant hits a shot out of a bunker onto the green.

The event serves as both a fundraiser and a gathering point for the commercial construction community. ABC Arkansas, one of 67 chapters nationwide, provides workforce development, political advocacy and professional education for contractors across the state. According to Roachell, the tournament offers a way to bring members together in a relaxed environment while strengthening the organization's mission to support its members.

"We have a diverse group of sponsors providing food, drinks and games at almost every hole along the course," Roachell noted. "This tournament would not be possible, however, without the support of Tim Hooper and Power Equipment. Power has been our presenting sponsor for five years, and Tim and

Sponsors provide food, drinks and games at almost every hole along the course.



An attendee tees off at ABC Arkansas' Northwest Arkansas Golf Tournament at Lost Springs Golf & Athletic Club in Rogers, Arkansas.



As the presenting sponsor, Power Equipment provides golfers with swag.



An attendee attempts the longest drive challenge.



A customer lines up a shot from the fairway.



A golfer reads the green for his birdie putt.

his team bring all the swag — golf balls, hats and towels — and make the day possible.”

Hooper said the event offers a unique opportunity to connect with customers and colleagues from across the region.

“This is a day when all of our customers are in one spot, so it makes it easy for us to see everyone,” stated Hooper, Springdale Branch Manager, Power Equipment. “We’re a relationship company, and this tournament is not only an opportunity to spend the day enjoying some golf, but also to grow our relationships with people we’ve known for years in a relaxed setting. It’s just a fun time.”

As players finished their rounds and gathered for food, prizes and conversation, the sense of community was evident.

“We started this with just a couple of tents along the course,” Hooper reflected. “Now, it sells out the first day it’s announced, and sponsors are excited to be involved. There are 200 golfers out here, and it just keeps getting bigger. We just couldn’t be happier to be out here associated with ABC, and we’re just glad to be part of it in any way we can.”

“There’s nothing else we’d rather do today than be out here supporting our members in Northwest Arkansas,” Roachell declared. ■



Discover more at  
[PowerEquipmenteer.com](https://PowerEquipmenteer.com)

# Wide spectrum of tasks with versatile mill

**WIRTGEN's W 210 XF delivers from surface layer rehabilitation to full-depth removal with power, precision and milling efficiency**

**W**IRTGEN's W 210 XF is engineered for maximum productivity across a wide spectrum of tasks — from surface layer rehabilitation to fine milling and full-depth pavement removal.

Built for major infrastructure projects such as freeways, state highways and airport runways, the W 210 XF combines high daily output with advanced machine intelligence such as WIRTGEN's MILL ASSIST machine control system. It automatically balances performance, fuel efficiency and operating costs. Operators can choose among three strategic modes — cost, performance or quality — while the system continuously optimizes milling parameters for the best results.

Power comes from a 778-horsepower engine with a torque profile that was refined specifically for cold milling demands. Paired with the DUAL SHIFT two-speed powershift transmission, the W 210 XF offers a large range of milling drum speeds. Lower drum speeds reduce fuel consumption, pick wear and noise, while higher speeds maximize output and deliver a superior milling pattern even at depths reaching up to 13 inches. This range ensures the machine can handle the most challenging milling tasks with efficiency and long-term sustainability.

## More accurate documentation

Flexibility is another hallmark. Thanks to its single-bolt design that utilizes on-board tools, the W 210 XF's Multiple Cutting System (MCS) enables the milling drum to be exchanged within minutes, allowing crews to quickly switch between drums with different tooth spacings. With the quick-change system, the entire drum housing can be swapped in under an hour to achieve milling widths of 6 feet, 7 inches; 7 feet, 3 inches; and 8 feet, 2 inches.

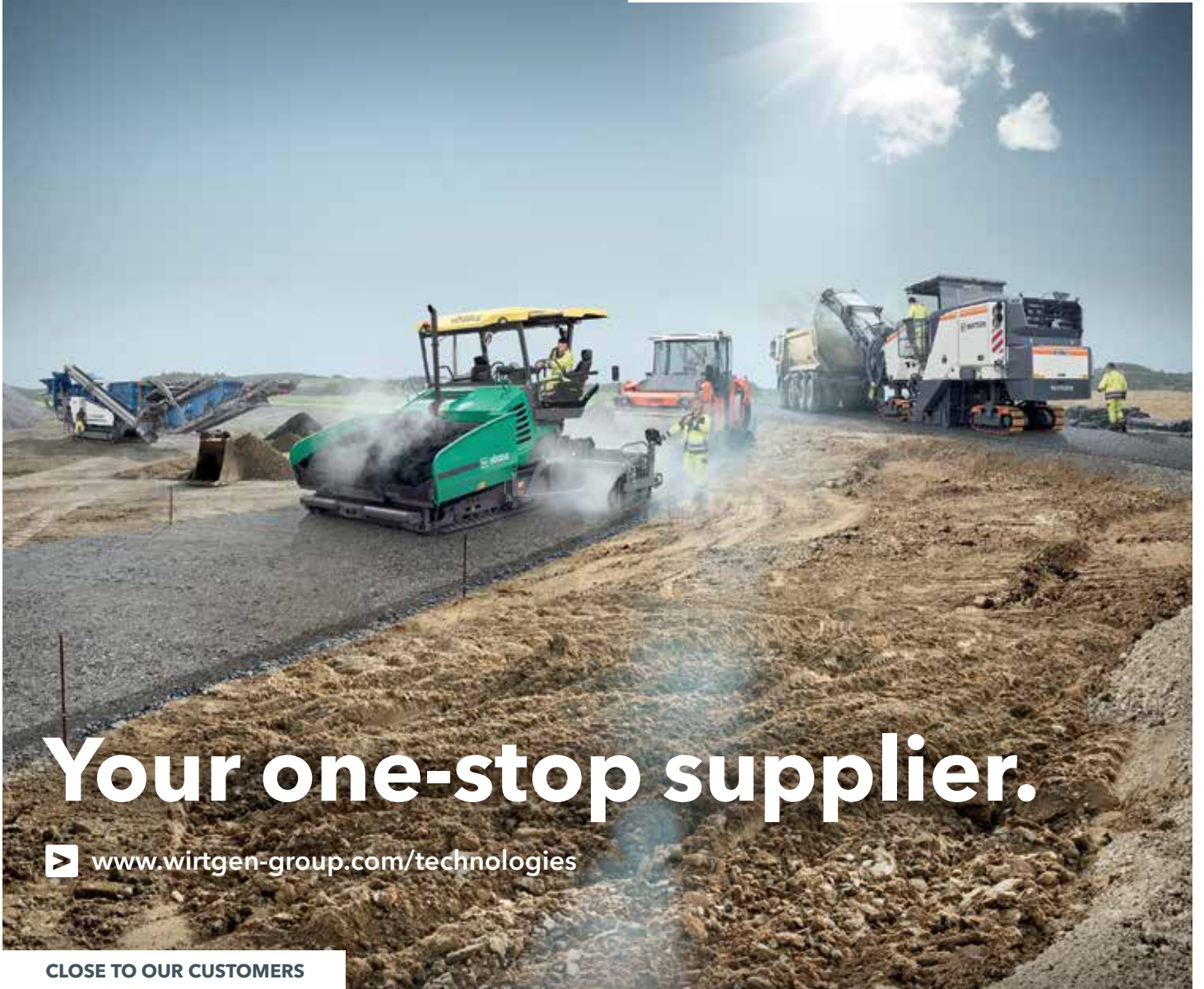
For documentation and jobsite transparency, WIRTGEN's WPT Milling (Wirtgen Group Performance Tracker Milling) records machine and site parameters automatically. Upon completion, data is transmitted to the owner for streamlined billing and analysis. All information appears in real time.

Precision is strengthened by the LEVEL PRO ACTIVE leveling system, which is fully integrated into the machine's controls. The system provides clear sensor feedback, simplifies operator workload and includes automated functions such as lifting over manhole covers, ensuring accurate milling results with minimal manual adjustments. ■

Quick specs			
Model	Horsepower	Operating weight	Milling widths
W 210 XF	778 HP	65,698 lbs.	6 feet, 7 inches to 8 feet, 2 inches



The WIRTGEN W 210 XF large milling machine tackles a full-depth pavement removal job, demonstrating its high-output performance and adaptable milling capabilities.



# Your one-stop supplier.

▶ [www.wirtgen-group.com/technologies](http://www.wirtgen-group.com/technologies)

CLOSE TO OUR CUSTOMERS

**ROAD AND MINERAL TECHNOLOGIES.** With leading technologies from the WIRTGEN GROUP, you can handle all jobs in the road construction cycle optimally and economically. Put your trust in the WIRTGEN GROUP team with the strong product brands WIRTGEN, VÖGELE, HAMM, KLEEMANN.

▶ [www.wirtgen-group.com](http://www.wirtgen-group.com)

WIRTGEN



VÖGELE



HAMM



KLEEMANN



[www.PowerEquipCo.com](http://www.PowerEquipCo.com)

**KNOXVILLE**

3300 Dozer Lane  
Knoxville, Tennessee 37920  
(865) 577-5563  
1-(800) 873-0961

**MEMPHIS**

3050 Ferrell Park Cove  
Memphis, Tennessee 38116-3502  
(901) 346-9800  
1-(800) 873-0965

**CHATTANOOGA**

4295 Bonny Oaks Drive  
Chattanooga, Tennessee 37406  
(423) 894-1870  
1-(800) 873-0963

**KINGSPORT**

1487 Rock Spgs. Road  
Kingsport, Tennessee 37664  
(423) 349-6111  
1-(800) 873-0964

**NASHVILLE**

320 Waldron Drive  
La Vergne, Tennessee 37086  
(615) 213-0900  
1-(800) 873-0962

**TUPELO**

1545 Highway 45  
Saltillo, Mississippi 38866  
(662) 869-0283  
1-(800) 873-0967

- ① PC360LC-11 demolition
- ② Fully automatic Lehnhoff SQ quick coupler
- ③ Montabert multiprocessor



## Hard to beat. **Easy to transport.**



The Komatsu PC360LC-11 demolition excavator is the ideal straight boom large excavator for tough demolition jobsites. It's also designed with dimensions that make it easier to move from project to project. This excavator is purpose-built with special guarding and other demolition-specific features enabling it to take on unique and challenging worksites. Pair it with a fully automatic Lehnhoff SQ quick coupler system that enables Montabert attachment changes right from the cab, and you have an equipment package that's hard to beat.

Discover more ► [komatsu.com/demolition](https://komatsu.com/demolition)

**KOMATSU**

© 2025 Komatsu Ltd. or one of its subsidiaries. All rights reserved.

**POWER**  
EQUIPMENT

[www.PowerEquipCo.com](https://www.PowerEquipCo.com)

**KNOXVILLE**

3300 Dozer Lane  
Knoxville, Tennessee 37920  
(865) 577-5563  
1-(800) 873-0961

**MEMPHIS**

3050 Ferrell Park Cove  
Memphis, Tennessee 38116-3502  
(901) 346-9800  
1-(800) 873-0965

**CHATTANOOGA**

4295 Bonny Oaks Drive  
Chattanooga, Tennessee 37406  
(423) 894-1870  
1-(800) 873-0963

**KINGSPORT**

1487 Rock Spgs. Road  
Kingsport, Tennessee 37664  
(423) 349-6111  
1-(800) 873-0964

**NASHVILLE**

320 Waldron Drive  
La Vergne, Tennessee 37086  
(615) 213-0900  
1-(800) 873-0962

**TUPELO**

1545 Highway 45  
Saltville, Mississippi 38866  
(662) 869-0283  
1-(800) 873-0967

# Work smarter, not harder with TFM

Takeuchi's telematics system is simple to set up, delivers a comprehensive view of your fleet operations and is free for the first five years

**A**s telematics technology becomes standard on modern construction equipment, Takeuchi Fleet Management (TFM) is helping owners turn machine data into meaningful action — without added complexity. Designed for both experienced professionals and first-time users, TFM remotely monitors machine data in real time to help owners better manage their fleet, improve productivity and lower overall operating costs.

TFM is available on most Takeuchi excavators, all track loader models and the crawler dumper. To make adoption even easier, Takeuchi provides TFM free of charge for the first five years of ownership, giving customers a powerful fleet management tool at no additional cost during a critical ownership period.

More than a basic GPS tracker, TFM delivers a comprehensive view of fleet operations through a simple, intuitive online portal accessible from a desktop, laptop, tablet or smartphone. From a single dashboard, users can monitor location, machine health, operating hours, alerts, maintenance schedules and analytics — anytime, anywhere.

The Map feature shows where each machine is located, with GPS updates at least once every hour. Owners can create geofences around jobsites or storage areas and receive alerts if a machine leaves a designated perimeter. Search and filter tools make it easy to quickly identify machines based on health or maintenance

status, helping reduce downtime and protect valuable assets.

In the Assets section, detailed machine data is available at a glance, including total hours, fuel level, battery status, engine speed, coolant temperature and ignition status. This remote visibility allows owners to check equipment health without being on-site and address issues before they escalate into costly repairs.

Maintenance and diagnostic alerts support a proactive approach to equipment care. Customizable service plans can be set based on hours or calendar dates, with advance reminders to help owners plan service efficiently. Each completed task is automatically logged, creating a digital maintenance history that supports machine longevity and resale value. Diagnostic alerts can also notify users of mechanical or electrical concerns early, helping prevent major failures.

TFM's analytics tools allow users to generate reports for individual machines or entire fleets, offering insight into utilization, maintenance and overall performance. Dealers can also access key diagnostic information to streamline troubleshooting and service.

With minimal setup and largely automated operation, TFM works behind the scenes to keep equipment safe, healthy and productive. To learn more about TFM subscriptions or to get started, contact your local dealer and see how easy smarter fleet management can be. ■



Takeuchi Fleet Management (TFM) delivers a comprehensive view of fleet operations, allowing users to monitor location, machine health, operating hours, alerts, maintenance schedules and analytics — anytime, anywhere.

# Demo Days

## Komatsu showcases more than 40 pieces of equipment and technology solutions at its Cartersville Customer Center

**G**aining actionable insights into how equipment and technology provide value can benefit your operation. The ability to experience a machine from the operator's seat adds value. Komatsu gave attendees the opportunity to do both during its most recent Demo Days at its Cartersville Customer Center in Georgia.

More than 40 products were available across the 38-acre demo site for customers to see up close and operate. The equipment ranged from compact excavators to large construction, forestry, demolition and mining machines, as well as forklifts and a reclaim feeder. Representatives from Komatsu and its affiliates, including Montabert, Hensley Industries and Lehnhoff, provided insights on how to effectively integrate the equipment and attachments into attendees' operations.

Komatsu Smart Construction and Smart Quarry representatives had displays set up to provide information on solutions available for jobsite management, such as Smart Construction Remote, Office, Field and Drone, as well as Smart Quarry Site and Smart Quarry Study. My Komatsu representatives provided information about Komatsu's online hub for optimal fleet management.

"What we have really focused on with Demo Days is the overall breadth of product offerings and solutions we have that are designed to increase efficiencies in any size of operation and at any stage of a project," said Andrew Earing, Director of Operator and Technical



Power Equipment Company's Corey Shumpert (center) shows Ratledge Construction's George Ratledge (left) and Chris Sneed (right) around Demo Days.





▶ VIDEO

Komatsu showcases its newest excavators at Demo Days, including the PC220LCi-12 with intelligent machine control (IMC) 3.0.

Training, Komatsu. “Customers have always appreciated the opportunity to get behind the joysticks or steering wheel and operate the machinery. More and more, we are seeing that they are now coming to learn about our technology and how to incorporate it.”

**“What we have really focused on with Demo Days is the overall breadth of product offerings and solutions we have that are designed to increase efficiencies in any size of operation and at any stage of a project.”**

— Andrew Earing,  
Director of Operator and Technical Training,  
Komatsu

**New machines stand out**

Among the standout machines available to operate were Komatsu’s new standard PC220LC-12 excavator and its PC220LCi-12 intelligent machine control (IMC) 3.0 model, which features automation such as auto grade assist, auto stop control, bucket angle hold, compaction control, auto swing, and payload monitoring. The PC220LCi-12 also has 3D boundary control, which helps operators work efficiently across the entire jobsite by remembering multiple restriction zones specific to each work area. It is the first OEM factory-integrated feature of its kind in the

construction industry. Auto swing with travel stop functionality is also an industry first for excavators.

The 21- to 24-ton-class PC220LC excavators have been engineered to empower operators and improve jobsite productivity. They feature a 28% larger cab with 30% more legroom versus the previous model, as well as improved visibility, reduced noise and vibration, and a high-quality, heated air-suspension seat. The new 8-inch HD monitor puts machine data, controls and customization options at the operator’s fingertips.

A new electronically controlled hydraulic system and high-output engine help deliver up to an 8% increase in digging force, up to 7% more lift capacity and up to a 20% reduction in fuel costs compared to the previous Komatsu PC210LC-11 model. The new P plus mode is designed to boost workload productivity by up to 18%.

“The PC220LC was built from the operator out and is the most advanced excavator Komatsu has ever built,” stated Matt Moen, Product Manager, Komatsu. “Our goal was to have the machine and operator working together. The larger cab with more glass and better visibility, along with an upgraded seat, increases comfort. It has electric-over-hydraulic controls, a new touch-panel monitor that enables extensive individual customization for each operator



Watch the video

Continued...

# Hybrid excavator and new wheel loaders on display

... continued

and much more. In the near future, we will add additional automation features such as swing-to-line and travel-along-line.”

In addition to the PC220LC excavators, attendees could operate the recently relaunched PC365LC-11 (formerly HB365LC-3) hybrid excavator that includes multifunction plus. It combines a new look with the same proven technology that captures energy during swing and stores it in the ultracapacitor. When swinging, all available hydraulic power is sent to the boom, arm and bucket to improve cycle time, reduce fuel consumption and increase production. Komatsu equipped the PC365LC-11 with its Smart Construction 3D Machine Guidance solution, which brings 3D to most conventional excavators. This gives operators in the field and managers in the office access to design and topographic data, helping drive accuracy, control load volumes and promote optimization.

---

***“This is always such a great event for customers, their dealers and for us, and we really enjoy being able to provide educational and operational opportunities.”***

*– Andrew Earing,  
Director of Operator and Technical Training,  
Komatsu*

---

Komatsu also spotlighted its new WA475-11 and WA485-11 wheel loaders, which deliver lower fuel consumption, higher engine power and greater climbing speed compared to

previous models. Both have a Komatsu Hydraulic Mechanical Transmission (KHMT) engineered for improved fuel efficiency and productivity, as well as large, comfortable cabs that help reduce fatigue.

## Smart Construction and other demonstrations

Komatsu demonstrated its Smart Construction Drone solution, which provides accurate jobsite topography safely, quickly and easily.

“The ability to fly and map a jobsite and send that data back to the office or field personnel digitally expedites the time it takes to evaluate the condition or the state of the project,” noted Earing. “Being able to track that in near-real time helps you make faster production and efficiency decisions regarding scheduling, resources and more. The data can easily be moved into other solutions, such as Dashboard.”

Demonstrations were also available for Komatsu’s FH120 forklift, RF-5 reclaim feeder and PC490HRD-11 high-reach demolition excavator equipped with the K100 boom change system that allows for hands-free boom changes from the cab of the machine.

“This is always such a great event for customers, their dealers and for us, and we really enjoy being able to provide educational and operational opportunities,” concluded Earing. “This Demo Days was a little rainy and chilly, but that didn’t seem to deter anyone from putting the machines to the test, which we like to see.” ■





# BUILDING AMERICA ONE ROAD AT A TIME

*LeeBoy's Heavy Commercial pavers deliver a host of features and benefits to the paving professional above their competition. LeeBoy's best in class designs represent the highest production pavers minimizing power losses with more efficient hydraulic systems.*

- ✔ Full size end auger flight combined with rounded auger back move material to the extension efficiently.
- ✔ Belt driven generator reduces power losses and generates less hydraulic heat load for lower operating temperatures.
- ✔ Counter rotating tracks and compact machine designs improve maneuverability and efficiency in tight spots.
- ✔ S-curve heating elements also provide more even heating of the screed plate.

LEARN MORE AT [WWW.LEEBOY.COM](http://WWW.LEEBOY.COM)



# Justin Kiser promoted

## Power Equipment Company announces key addition to senior leadership team



Justin Kiser,  
Vice President,  
Regional Sales Manager  
– East Tennessee,  
Power Equipment  
Company

**P**ower Equipment Company, a subsidiary of Bramco Inc., announced the promotion of Justin Kiser to Vice President, Regional Sales Manager – East Tennessee.

---

***“Justin has been instrumental in building our customer relationships in East Tennessee, and I look forward to his continued contributions.”***

*– Andy Moon,  
President,  
Power Equipment Company*

---

Mike Paradis, Bramco Chairman, stated, “Justin has done an outstanding job leading our Power Equipment Company East Tennessee team, and

I look forward to continuing to work with him to expand our market presence.”

Andy Moon, President of Power Equipment Company, added, “Justin has been instrumental in building our customer relationships in East Tennessee, and I look forward to his continued contributions.”

Kiser has been with Power Equipment since 2020 and previously managed multiple branches as the district general manager for a commercial truck dealership. Kiser attended the University of Tennessee where he obtained his bachelor’s degree in logistics with collateral in marketing. He resides with his wife, Catie, and two boys in Knoxville, Tennessee. Outside of work, he enjoys spending time outdoors with his family. ■

# New AEM study unveiled

## Advances in construction, utility and agriculture equipment are allowing organizations to increase productivity while significantly reducing water use

**A** new Association of Equipment Manufacturers (AEM) study, “From Source to Solution: Advancing Water Stewardship in the Non-Road Sector,” which was produced in collaboration with AEM member company and global management consulting firm Kearney, finds that advances in construction, utility and agriculture equipment are allowing organizations to increase productivity while significantly reducing water use.

According to the study:

- Modern irrigation practices are saving the U.S. 9.7 trillion gallons of water annually
- Innovations in concrete production have been shown to reduce freshwater needs by up to 20% during new concrete production
- Field-scale conservation practices are producing measurable improvements in water quality across multiple U.S. watersheds
- Modern utility efficiencies are saving the U.S. and Canada nearly 4 trillion gallons of

water annually — avoiding withdrawals that would otherwise be needed to support today’s population

- North American industrial water use has become more efficient over the last two decades, generating more economic value per unit of water

“This study demonstrates that North American equipment manufacturers are doing more than just supplying innovative and cutting-edge equipment — they are enabling some of the most advanced water stewardship practices in the world,” said Curt Blades, Vice President of Agriculture Services & Forestry, AEM. “It also serves as a valuable resource for AEM, our members and our peers as we seek to develop a cohesive and comprehensive message around water management for our industry.”

To learn more, visit <https://www.aem.org/news/aem-unveils-comprehensive-study-on-agriculture-construction-and-utility-water-utilization>. ■

# The original construction broom company



## Broce Broom

With a wide range of options, Broce Brooms are versatile enough to handle nearly any sweeping challenge. From optional curb sweepers and water spray systems to scraper blades and a choice of engines, you can customize your Broce Broom to meet individual job site needs.

All self-propelled Broce Brooms have a standard hydrostatic drive and a compact wheel base for better maneuverability in tight places. Our sound-suppressed cab provides maximum operator comfort and visibility for optimal productivity and safety.

To find out how Broce Brooms can help you make a clean sweep every time, contact your local Power Equipment branch for a demonstration.

**POWER**  
EQUIPMENT **THE POWER TO PERFORM**

### KNOXVILLE

3300 Alcoa Highway  
Knoxville, Tennessee 37920  
(865) 577-5563  
1-(800) 873-0961

### CHATTANOOGA

4295 Bonny Oaks Drive  
Chattanooga, Tennessee 37406  
(423) 894-1870  
1-(800) 873-0963

### NASHVILLE

320 Waldron Drive  
La Vergne, Tennessee 37086  
(615) 213-0900  
1-(800) 873-0962

### MEMPHIS

3050 Ferrell Park Cove  
Memphis, Tennessee 38116-3502  
(901) 346-9800  
1-(800) 873-0965

### KINGSPORT

1487 Rock Spgs. Road  
Kingsport, Tennessee 37664  
(423) 349-6111  
1-(800) 873-0964

### TUPELO

1545 Highway 45  
Saltillo, Mississippi 38866  
(662) 869-0283  
1-(800) 873-0967

[www.PowerEquipCo.com](http://www.PowerEquipCo.com)

# My Komatsu Parts 360

## New enhancements streamline ordering in a few simple steps for efficient fleet service planning

**K**omatsu continues to enhance the digital ownership experience for equipment users through My Komatsu, its comprehensive online central portal designed to make fleet management and parts ordering easier than ever. A key initiative was recently launched to improve ordering on My Komatsu, called "Parts 360." The goal was to roll out an end-to-end solution that simplifies everything from identifying the right component to tracking delivery.

According to Michael Carranza, Komatsu's Senior Manager of Digital Experience, Parts 360 was embarked on with a clear mission: "We wanted to take care of the customer from looking up the part to delivery at their jobsite."

Carranza explained that every stage of the process is designed with efficiency and flexibility in mind, giving customers the power to choose what works best for their workflow — whether that means picking up items at a local dealership or having Komatsu ship them directly to a jobsite.

The Parts 360 enhancements deliver a streamlined, intuitive shopping experience that removes guesswork and reduces downtime. Through My Komatsu, users can easily search for the correct components by selecting their machine's model and serial number or by browsing categories, products and parts. If a customer doesn't know the specific name of a part, Carranza noted that they can "look at pictures and diagrams of their machines to find out what the part number is and what it's called."

Once parts are added to the cart, users gain immediate access to critical information, including

inventory levels, lead times and branch availability, as well as any current promotions.

"It's all at their fingertips," stated Carranza.

Product images give added reassurance and enhanced shopping tools — such as freight estimates and order cutoff times — help customers plan repairs with confidence, according to Carranza.

### Ordering parts is now made simpler than ever:

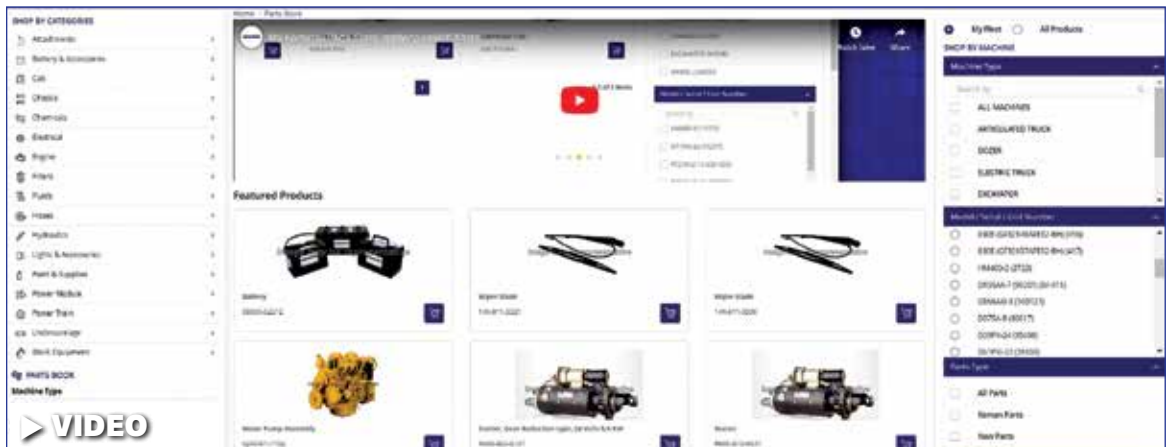
1. Log in to your My Komatsu account via desktop or the mobile app.
2. Select a registered machine from your fleet or enter a model number.
3. Search for the needed part by keyword, category or visual diagram.
4. Add items to the shopping cart, and review availability and shipping options.
5. Choose fulfillment — pickup, jobsite delivery or a combination of both.
6. Submit payment, confirm the order, and enroll in text or email updates.

After checkout, these enhancements continue to deliver value. Customers receive real-time notifications from processing to delivery, eliminating uncertainty.

Carranza emphasized, "There's no second guessing. You know where your order is in the process. With the Parts 360 enhancements, Komatsu reinforces its commitment to uptime by putting genuine parts, transparent information and flexible fulfillment directly into customers' hands — at no additional cost." ■



Watch the video



New online ordering enhancements from the Parts 360 project make My Komatsu an end-to-end solution that can simplify your experience from finding the right component to tracking delivery.

Year/Make/Model	S/N	Equipment Number	Location	Hours
<b>Compaction</b>				
2019 HAMM H 7i	H222.2847	E004720	Louisville, KY	770
2019 HAMM H 10i P	H235.1063	E008918	Louisville, KY	1,975
2023 HAMM HC 100i P	H252.0066	E010242	Louisville, KY	325
2023 HAMM HC 100i	H252.0247	E010364	Louisville, KY	727
<b>Dozers</b>				
2024 Komatsu D39PXi-24	101577	E006752	Louisville, KY	791
2023 Komatsu D39PXi-24	100965	E009159	Louisville, KY	1,914
2023 Komatsu D39PXi-24	101019	E007921	Louisville, KY	3,142
2023 Komatsu D51EXi-24	B25374	E005369	Louisville, KY	1,013
2024 Komatsu D51PXi-24	B25546	E007903	Louisville, KY	475
2024 Komatsu D51PX-24	16376	E007286	Louisville, KY	982
2023 Komatsu D61PXi-24	B66368	E010510	Louisville, KY	1,123
2023 Komatsu D71PXi-24	71207	E009835	Louisville, KY	2,202
2024 Komatsu D51PX-24	B25665	E007537	Little Rock, AR	2,019
2023 Komatsu D51PX-24	15896	E008685	Nashville, TN	1,163
2022 Komatsu D51PXi-24	15433	E009433	Tupelo, MS	3,984
2018 Komatsu D61EX-24	B60510	PTC1174	Knoxville, TN	5,717
2022 Komatsu D61PXi-24	B65476	E009436	Tupelo, MS	4,352
2021 Komatsu D61PX-24	B61494	E009411	Kingsport, TN	5,287
2024 Komatsu D61PX-24	B66800	E005438	Evansville, IN	4,490
2023 Komatsu D61PX-24	B65880	BTE24503	Indianapolis, IN	3,463
<b>Excavators</b>				
2024 Komatsu PC138USLC-11	C31297	E006984	Louisville, KY	761
2025 Komatsu PC170LC-11	C10110	E010187	Tupelo, MS	132
2024 Komatsu PC360LC-11	A39735	E009885	Little Rock, AR	2,584
2023 Takeuchi TB290CR	185109693	E009024	Nashville, TN	2,230
2020 Komatsu PC88MR-10	9163	E009288	Memphis, TN	3,004
2024 Komatsu PC88MR-11	C40611	E008071	Little Rock, AR	1,426
2024 Komatsu PC290LC-11	C60056	E005053	Little Rock, AR	2,600
2020 Komatsu PC490LC-11	A42494	BTE24D25	Louisville, KY	5,914
<b>Pavers</b>				
2019 VÖGELE 2003-3i	975.0163	E008041	Nashville, TN	4,204
2021 LeeBoy 8520	8520-304105	E004844	Indianapolis, IN	2,995
2023 LeeBoy 8520C	8520.380703	E000872	Louisville, KY	990
2020 LeeBoy 8520B	8520-280538	E010101	Chattanooga, TN	2,815
<b>Track Skid Steers</b>				
2023 Takeuchi TL10V2-CRHR	410006825	E008938	Stanville, KY	50
2022 Takeuchi TL12V2-CR	412005238	E007081	Indianapolis, IN	1,505
2022 Takeuchi TL10V2-CRH	410005575	E009023	Kingsport, TN	2,227
<b>Wheel Loaders</b>				
2022 Komatsu WA380-8	A75915	E006582	Louisville, KY	6,858
2023 Komatsu WA500-8	A97974	E010492	Louisville, KY	10,217
2023 Komatsu WA200-8	88100	E004269	Evansville, IN	5,121
2023 Komatsu WA270-8	86432	E008678	Stanville, KY	3,872
2023 Komatsu WA320-8	A51693	E007435	Nashville, TN	4,570
2021 Komatsu WA500-8YL	A97419	E006297	Indianapolis, IN	14,158



# CERTIFIED RENTAL®

Your top choice for heavy equipment rentals  
across the South, East, & Midwest!



## BRANDS INCLUDE

- Komatsu
- Hamm
- Montabert
- Terramac
- Takeuchi
- & more!



Call our hotline or Your Local Power Branch to learn more about rental options!  
**(800) 997-7530 | CertifiedRENTAL.com**



CONTACT YOUR LOCAL  
BRANCH TODAY!

CHATTANOOGA, TN  
(423) 894-1870

KINGSPORT, TN  
(423) 349-6111

KNOXVILLE, TN  
(865) 577-5563

MEMPHIS, TN  
(901) 346-9800

NASHVILLE, TN  
(615) 213-0900

LITTLE ROCK, AR  
(501) 823-4400

SPRINGDALE, AR  
(479) 927-1672

TUPELO, MS  
(662) 869-0283



SCAN TO VISIT  
OUR WEBSITE