

# **POWER**

# **EQUIPMENTEER**

**KOMATSU**

A publication for and about Power Equipment Company's customers • [www.PowerEquipmenteer.com](http://www.PowerEquipmenteer.com) • Issue 3, 2025

## **Little B Enterprises Inc.**



## **Tri-County Crushed Stone**







Andy Moon

## A message from Power Equipment Company



Dear valued customer:

We are continually seeking ways to help optimize your operations, and Komatsu's digital solutions are a great place to start. We offer an in-depth look at My Komatsu, Komatsu's comprehensive digital hub, which provides an easy way to collect, visualize and monitor machine information from both Komatsu and non-Komatsu equipment. It can help benefit your bottom line by providing time and cost savings.

The new Komatsu Supercoolant, which utilizes advanced POAT (phosphated organic acid technology) with corrosion inhibitors, can also help you reduce downtime and costs. The formula is designed to better protect machinery against the elements and premature failure. Read the article inside to learn more about this innovative product, which can be used in all Komatsu equipment and other all-makes equipment with Cummins engines.

If you are looking for wheel loaders built for increased productivity, operator comfort and ease of maintenance, Komatsu recently introduced its new WA475-11 and WA485-11 models. Both offer lower fuel consumption and more engine power compared to their predecessors. Yard loader configurations designed to support higher productivity in aggregate applications are also available for both models.

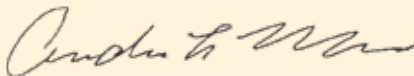
Equipment showcases are a great way to gain firsthand experience with new machines, such as the WA475-11 and WA485-11, and learn from experts. You won't want to miss North America's largest trade show, CONEXPO-CON/AGG, which will take place March 3-7, 2026, in Las Vegas. It will arrive sooner than you think, but for now, you can check out a preview of the event in this issue. Be sure to visit Komatsu's booth at the show to see its latest solutions.

There are also several other valuable articles for you to enjoy, including a customer testimonial that highlights the many benefits of Komatsu Reman components, such as being a more cost-effective and sustainable option compared to will-fit items.

As always, if there is anything we can do for you, please feel free to contact one of our branch locations covering Tennessee, Arkansas, and parts of Virginia and Mississippi.

Sincerely,

Power Equipment Company



Andy Moon,  
President

## In this issue

### Digging into growth pg. 4

Read Tri-County Crushed Stone's success story.

### Rock-solid success pg. 8

Delve into how Little B Enterprises Inc. overcomes challenges with specialized equipment and trusted partnerships.

### Experience the next level of innovation pg. 12

Preview CONEXPO-CON/AGG 2026.

### Make the most of your telematics data pg. 15

Learn more about My Komatsu.

### Komatsu introduces WA475-11 and WA485-11 pg. 17

Check out Komatsu's new wheel loaders.

### Purpose-built forestry machine pg. 18

Get a glimpse of the new TimberPro TN230D log loader.

### Pave effortlessly pg. 21

Take a look at WIRTGEN's new SP 33 slipform paver.

### Debuts for WIRTGEN GROUP pg. 22

View new machines from the WIRTGEN GROUP.

### Interactive experience for customers pg. 24

Explore Quarry Days.

### Advanced formula with phosphates pg. 27

Discover how the new Komatsu Supercoolant helps provide better protection against corrosion.

### New LeeBoy equipment on display pg. 29

See the products LeeBoy showcased at the World of Asphalt Show & Conference and AGG1 Aggregates Academy & Expo.

### Cost-effective way to maintain productivity pg. 30

Find out the benefits of Komatsu Reman components.

**POWER**  
EQUIPMENT

THE POWER TO  
PERFORM

www.PowerEquipCo.com

An equal opportunity, affirmative action employer

**KOMATSU**

Published for Power Equipment Company.  
© 2025 Construction Publications Inc. Printed in the USA.

## Leadership Team

**Andy Moon,**  
President

**Shawn Robins,**  
Vice President,  
Product Support

**Tim Hancock,**  
General Manager,  
Credit & Finance

**Mike Luster,**  
Vice President,  
Regional Sales Manager  
(Nashville)

**Darryl Thompson,**  
Vice President,  
Regional Sales Manager  
(Memphis, Tupelo, Little Rock)

**Justin Kiser,**  
Regional Sales Manager  
(Knoxville, Kingsport, Chattanooga)

**Tim Hooper,**  
Regional Branch Manager,  
Northwest Arkansas

**Brian Bourne,**  
Sales Manager,  
Central and South Arkansas

**Aaron Kiser,**  
Corporate Rental Sales Manager

**Steve Woodby,**  
Corporate Sales Administration  
and Inventory Manager

**Wayne White,**  
General Product Support Manager

**Jami Frank,**  
Senior Marketing Specialist

**Danielle Belvoix,**  
Senior Digital Marketing Specialist

### Chattanooga, TN

4295 Bonny Oaks Drive  
(423) 894-1870  
(800) 873-0963

### Kingsport, TN

1487 Rock Springs Road  
(423) 349-6111  
(800) 873-0964

### Knoxville, TN

3300 Dozer Lane  
(865) 577-5563  
(800) 873-0961

### Memphis, TN

3050 Ferrell Park Cove  
(901) 346-9800  
(800) 873-0965

### Nashville (La Vergne), TN

320 Waldron Drive  
(615) 213-0900  
(800) 873-0962  
Drill Sales: (615) 641-3000

### Tupelo (Saltillo), MS

1545 Highway 45  
(662) 869-0283  
(800) 873-0967

### Little Rock, AR

2801 W. 65th Street  
(501) 823-4400

### Springdale, AR

781 E. Randall Wobbe Lane  
(479) 927-1672

# Digging into growth

## Rodney Murphy adds Tri-County Crushed Stone to expand his services from excavation to quarry operations and meet rising local demand



Rodney Murphy,  
Partner,  
Tri-County  
Crushed Stone

**R**odney Murphy didn't plan to get into the quarry business, but after decades of buying crushed stone from others, the move became a necessity. As the owner of Murphy's Bobcat Inc. and a partner in Tri-County Crushed Stone, he now oversees a vertically integrated operation that covers everything from site excavation to aggregate supply.

"We started out hauling rock and topsoil, doing residential and commercial excavation, and running trucks," Murphy recalled. "Eventually, we realized we were buying so much stone that it made sense to source it ourselves. That's where Tri-County Crushed Stone came from. Now, Murphy's Bobcat and Tri-County operate as affiliate companies. One side feeds the other, and it's allowed us to stay efficient."

Murphy launched Murphy's Bobcat in 2000 after leaving a factory job and buying his first skid steer. Over the past 25 years, the business has grown to 80 employees and

taken on multimillion-dollar commercial projects across East Tennessee.

"We built the company one yard and one driveway at a time," Murphy said. "People think it was overnight, but it's been a steady crawl. You treat people right, do what you say, and the rest takes care of itself."

---

***"We saw prices going up and felt like there needed to be another option. It's tough work getting a quarry permitted and operational, but we were committed."***

*- Rodney Murphy,  
Partner,  
Tri-County Crushed Stone*

---

Tri-County Crushed Stone, which is based in Greenback, Tennessee, was created to provide a competitive alternative to the region's major aggregate suppliers. It operates in Loudon, Blount and Knox counties, with customers frequently coming from surrounding areas as well.

"We saw prices going up and felt like there needed to be another option," Murphy explained. "It's tough work getting a quarry permitted and operational, but we were committed. If only one supplier controls the market, they set the prices — and that doesn't help anyone."

Now fully operational, the quarry is producing a variety of limestone materials. From topsoil to red dirt and clean stone, crews extract, screen and haul the products.

"Everything from stripping overburden to pulling rock — we try to do as much in-house as we can," Murphy added.

With nearly 90 total employees between both businesses, Murphy attributes much of the success to his team — and the values he learned early on.

"I started working construction when I was 14," Murphy shared. "Those guys taught me to take pride in my work and do it right the first time. That mindset has stayed with me."

### Driving efficiency

To perform efficient, high-quality work, Tri-County Crushed Stone uses several

### Customer snapshot

**Company:** Tri-County Crushed Stone

**Location:** Greenback, Tennessee

**Employees:** Approximately 10

**Established:** 2024

**Area of expertise:** Limestone aggregate production and sales

**Komatsu equipment:** HB365LC-3 hybrid excavator; PC490LC-11 excavator; WA480 wheel loader; HM400 articulated haul trucks

Tri-County Crushed Stone appreciates the fuel efficiency of the Komatsu HB365LC-3 hybrid excavator.

► VIDEO







An operator uses a Komatsu PC490LC-11 excavator to load a Komatsu HM400 articulated haul truck.

Komatsu machines, including an HB365LC-3 hybrid excavator, a PC490LC-11 excavator, a WA480 wheel loader and two HM400 articulated haul trucks. Shawn Whybrew, Plant Manager at Tri-County Crushed Stone, was initially skeptical of the hybrid technology but was sold after spending time in the cab.

"The 365 is strong, it turns while digging better than anything I've run, it's very quiet, and the fuel efficiency is fantastic," declared Whybrew. "With equipment, fuel is a serious cost, and the 365's fuel consumption is about half of the 490, which is great for us."

As a hybrid, the Komatsu HB365LC-3 captures energy during swing operations and uses it to boost efficiency, which is critical in the quarry's continuous truck-loading cycles.

"We're loading red dirt, feeding crushers and running trucks out all day," Whybrew emphasized. "It's perfect for that kind of work."

The Komatsu PC490LC-11 is typically used to move large boulders and handle heavier excavation tasks in the quarry pit.

"That 490 is a beast," Murphy commented. "A few scoops and the HM400 trucks are fully loaded. It's all about production and time, and the 490 keeps everything moving."

Tri-County Crushed Stone selected the Komatsu HM400 haul trucks for their midsize

capacity and maneuverability in the early stages of quarry development.

"They're the right size for us starting out — huge trucks wouldn't work in our space," Murphy noted. "Plus, when you have good equipment, it's easier to find and keep good people."

***"The 365 is strong, it turns while digging better than anything I've run, it's very quiet, and the fuel efficiency is fantastic."***

*- Shawn Whybrew,  
Plant Manager,  
Tri-County Crushed Stone*

Murphy also acquired several Komatsu D51PXi-24 intelligent machine control (IMC) dozers and midsize excavators like the PC210 and PC200 for Murphy's Bobcat.

"We have three or four D51s, and they've been great for grading," Murphy said. "As jobs get bigger, we're always looking to scale up, but those machines hit the sweet spot."

### Power Equipment support key

Murphy emphasized that none of his equipment success would be possible without the support of Power Equipment Company, especially Territory Sales Manager Aaron Dockery.

"We've been working with Power for more than a decade, and they have always been



Shawn Whybrew,  
Plant Manager,  
Tri-County  
Crushed Stone



Discover more at  
[PowerEquipmenteer.com](http://PowerEquipmenteer.com)

Continued...



# 'Aaron and the team are always there for us'

... continued

outstanding," Murphy reflected. "Aaron and the team are always there for us — nights, weekends, whatever it takes. They don't just sell machines; they help us run our business better."

---

***"We've been working with Power for more than a decade, and they have always been outstanding."***

*- Rodney Murphy,  
Partner,  
Tri-County Crushed Stone*

---

## By the numbers

- Komatsu HB365LC-3 hybrid excavator has demonstrated a **50%** reduction in fuel consumption compared to the Komatsu PC490LC-11 excavator
- Komatsu HM400 articulated haul truck has a capacity of **44.1** US tons
- Rodney Murphy has been working with Power Equipment for **10+** years



Power Equipment Territory Sales Manager Aaron Dockery (left) helps Tri-County Crushed Stone's Rodney Murphy find the right equipment for his quarry operation.

An operator loads topsoil into the bed of a truck with a Komatsu WA480 wheel loader.

For instance, Dockery introduced the HB365LC-3 hybrid excavator to Murphy during Komatsu's Quarry Days event in Arizona, and it made an immediate impression.

"I couldn't stop thinking about it after we left," Murphy recalled. "On the flight home, I was already figuring out how to get one. It fit our needs perfectly."

That kind of guidance is what keeps Murphy loyal to Power Equipment.

"They don't try to oversell us," Murphy said. "They listen to what we need, suggest solutions, and they follow through every time. That's why we keep going back."

## Bright future

Looking ahead, Tri-County Crushed Stone plans to continue expanding its quarry operations and establishing itself as the go-to aggregate supplier in the region.

"We're not trying to be the biggest, but we want to be the best partner for the people we work with," Murphy stated. "Dedication is day by day, and slow growth is really the key to success."

For Murphy, it all comes down to consistency, integrity and surrounding himself with the right people.

"Treat your customers like partners, treat your employees like family, and work with distributors who have your back," Murphy concluded. "That's how we've made it this far, and that's how we'll keep going." ■

*\*The opinions expressed here are from the end user as quoted. The results described herein are those of these end users under certain conditions. Individual results may vary.*





**POWER** is your quarry  
EQUIPMENT  
& mining equipment expert!

***CONTACT YOUR LOCAL BRANCH  
FOR MORE INFORMATION!***

**Little Rock, AR**  
(501) 823-4400

**Chattanooga, TN**  
(423) 894-1870

**Memphis, TN**  
(901) 346-9800

**Springdale, AR**  
(479) 927-1672

**Kingsport, TN**  
(423) 349-6111

**Nashville, TN**  
(615) 213-0900

**Tupelo, MS**  
(662) 869-0283

**Knoxville, TN**  
(865) 577-5563

**SCAN ME**

LEARN  
MORE BY  
VISITING  
OUR  
WEBSITE  
TODAY!



PowerEquipCo.com



# Rock-solid success

Little B Enterprises Inc. overcomes challenges with specialized equipment and trusted partnerships



Kevin Hylton,  
Owner and President



Discover more at  
PowerEquipment.com

**L**ittle B Enterprises Inc. has been a cornerstone of the Castlewood, Virginia, construction industry for more than five decades. Founded in 1972 by Walter "Buck" Hylton, the company started in coal mining before shifting to construction in the early 1980s. Today, under the leadership of second-generation owner Kevin Hylton, Little B Enterprises specializes in utility work, with about 90% of its projects focused on water and sewer installation.

"We've been in business for 53 years by taking small steps," said Kevin. "We don't take big leaps. We just try to manage things ourselves, keep our growth controlled, and always do the right thing for our customers."

Kevin added, "When we were doing mass grading, we found ourselves sitting a lot due

to weather delays. Utility work is year-round, and it turned out to be a great move for us."

The third generation of the Hylton family is also deeply involved in the business. Kevin's daughter, Mandi King, helps with various tasks such as estimating, while his son, Seth Hylton, manages the trucking company and runs equipment when needed.

***"Our workforce is our most valuable asset."***

*-Kevin Hylton,  
Owner and President,  
Little B Enterprises Inc.*

"It's really special to work with my family every day," Mandi commented. "I never thought I'd come back home, but now I can't imagine being anywhere else."

Little B Enterprises' approximately 25 employees, many of whom have been with the company for years, add to the tight-knit, family-like atmosphere of the business and are at the heart of the company's success.

"Our workforce is our most valuable asset," Kevin stated. "They're very knowledgeable. We're just so proud to have the crews that we have."

## Customer snapshot

**Company:** Little B Enterprises Inc.

**Location:** Castlewood, Virginia

**Employees:** Approximately 25

**Established:** 1972

**Area of expertise:** Utilities

**Komatsu equipment:** PC138USLC-11, PC228USLC-11 and PC360LC-11 excavators

An operator moves a pipe at Little B Enterprises' yard with a Komatsu PC228USLC-11 excavator.

► VIDEO







Little B Enterprises relies on its fleet of Komatsu excavators for its utility jobs, including PC138USLC-11, PC228USLC-11 and PC360LC-11 models.

"It's like a big family gathering every day we come to work, which makes it enjoyable," added Seth.

Kevin also emphasized the importance of keeping his staff close to home.

"We try to stay within a five-county region," Kevin noted. "We don't mind stepping out, if necessary, but our goal is to have our employees home at night. That's something we really value."

Little B Enterprises also takes great pride in its ability to serve its community, especially in times of need. After severe flooding in the region, the business stepped in to assist with storm cleanup and infrastructure repairs.

"We have resources that we sometimes take for granted," Mandi reflected. "Being able to help our community when they need it most is one of the most rewarding parts of the job."

### Overcoming rock challenges

Despite Little B Enterprises' growth and success, challenges remain. One of the biggest obstacles in the company's region is the abundance of rock, which has required strategic investments in

specialized equipment. Little B Enterprises has relied on Power Equipment Company for its machinery needs since 1981.

"A few years ago, we purchased a grinder for our Komatsu PC360LC-11 excavator," Kevin said. "It's been a game-changer for handling rock jobs and has really helped improve our efficiency."

***"Our operators love the Komatsu machines."***

*-Kevin Hylton,  
Owner and President,  
Little B Enterprises Inc.*

In addition to the Komatsu PC360LC-11, Little B Enterprises' equipment fleet includes Komatsu PC138USLC-11 and PC228USLC-11 tight tail swing excavators, which are beneficial tools for utility work. With many projects taking place in urban or heavily congested areas, these machines allow the team to work efficiently without compromising safety or productivity.

"Our operators love the Komatsu machines," Kevin stated. "They handle well, have great uptime, and we rarely have downtime issues."



**Mandi King,  
Estimator**



**Seth Hylton,  
Trucking Manager  
and Operator**

*Continued...*



# 'It's been a great relationship'

... continued

## Reliable support

Little B Enterprises' long-standing relationship with Power Equipment has been built on trust and reliability. Power Equipment's ability to provide timely parts and service has kept Little B Enterprises' operations running smoothly.

***"We've been working with Power Equipment for over 40 years, and they've always supported us."***

*-Kevin Hylton,  
Owner and President,  
Little B Enterprises Inc.*

"We've been working with Power Equipment for over 40 years, and they've always supported us," Kevin declared. "Whenever we need something, they're right there to help. It's been a great relationship."

That ongoing support is especially valuable when uptime is essential and downtime needs to be avoided. From routine service to unexpected repairs, Power Equipment

ensures that parts, maintenance and guidance are available when needed most.

"Anybody can sell you a machine," Kevin added. "It's the after-sale support that really matters. That's what's kept us coming back all these years."

## Continued growth

Looking ahead, Little B Enterprises plans to continue its steady growth, expanding its capabilities while maintaining its commitment to quality and customer service. The family business also aims to explore new types of work and integrate technology into its operations.

"I'm proud to be the second generation in this company and have the next generation helping me," Kevin concluded. "My dad worked really hard, and he started from nothing. It's my job to pick up where he left off and keep it going."

With a strong foundation, a dedicated team and a reliable equipment partner, Little B Enterprises is positioned to continue its legacy for generations to come. ■

## By the numbers

- 90% of projects are focused on water and sewer installation
- 5-county territory
- 44-year partnership with Power Equipment

*\*The opinions expressed here are from the end user as quoted. The results described herein are those of these end users under certain conditions. Individual results may vary.*

(L-R) Little B Enterprises is owned and operated by the Hylton family, including Mandi King, Kevin Hylton and Seth Hylton.







# FORMIDABLE, NIMBLE, UNSTOPPABLE

An operator once said, "Give me performance or give me death." So we hooked him up with the turbocharged TL6R track loader, featuring 65.2 hp, active power control and quiet-ride track design – all in a machine compact enough to fit on smaller job sites with ease. Now the operator refuses to ever quit working, just like his machine.

**THE MARK OF TOUGHNESS**



**POWER**  
EQUIPMENT

[www.PowerEquipCo.com](http://www.PowerEquipCo.com)

LITTLE ROCK, AR  
(501) 823-4400

KNOXVILLE, TN  
(865) 577-5563  
1-(800) 873-0961

SPRINGDALE, AR  
(479) 927-1672

MEMPHIS, TN  
(901) 346-9800  
1-(800) 873-0965

TUPELO, MS  
(662) 869-0283  
1-(800) 873-0967

CHATTANOOGA, TN  
(423) 894-1870  
1-(800) 873-0963

KINGSPORT, TN  
(423) 349-6111  
1-(800) 873-0964



ROBUST DEALER NETWORK



TAKEUCHI FLEET MANAGEMENT



GENUINE PARTS

» DIG IN AT [TAKEUCHI-US.COM](http://TAKEUCHI-US.COM)



# Experience the next level of innovation

**CONEXPO-CON/AGG will return to Las Vegas with new features slated for North America's largest construction trade show**

**C**ONEXPO-CON/AGG will return to the Las Vegas Convention Center from March 3 to 7, 2026, introducing new features and innovations to the triennial event, which is the largest construction trade show in North America. The 2023 show set an attendee record with more than 139,000 from 133 countries. Over 2,400 exhibitors participated, spread across 3 million square feet of exhibit space.

---

***"We are especially excited to create new experiences and features for both attendees and exhibitors."***

*-Dana Wuesthoff,  
CONEXPO-CON/AGG Show Director*

---

"The continued growth and success of CONEXPO-CON/AGG has set a new benchmark for the industry," said CONEXPO-CON/AGG Show Director Dana Wuesthoff. "Building on this momentum, we will deliver an even more impactful event in 2026, continuing to provide unparalleled opportunities for networking,

education and highlighting the latest innovations in the construction industry. We are especially excited to create new experiences and features for both attendees and exhibitors."

## New in 2026

**Ground Breakers stage:** The keynote stage will highlight the global contributions of the construction industry and bring focus to critical industry topics.

Key topics include:

- Innovation in construction technology and practices
- Public policy impacting the industry
- Workforce development and addressing labor challenges
- Sustainability and environmental responsibility
- Mental health and well-being in the construction sector

**EmpowerHER workshop:** During Women in Construction Week 2026, the EmpowerHER workshop will be a special



North America's largest construction trade show, CONEXPO-CON/AGG, will return to the Las Vegas Convention Center March 3-7, 2026.





2,000 exhibitors are expected at CONEXPO-CON/AGG 2026, including Komatsu.

event dedicated to addressing the unique challenges and opportunities women face in the construction industry.

This program includes:

- Networking events fostering connections and community among women in the construction industry
- Peer-led panel discussions and keynote presentations featuring industry leaders and experts
- Sponsorship opportunities to support and promote women-focused initiatives

**Small Business workshop:** This recognizes the vital role of small businesses in the construction sector, addressing the unique challenges faced by small business owners.

It will provide:

- Networking events to build valuable connections for small businesses
- Best practices and practical tools that can be implemented immediately
- Sponsorship opportunities to support small business success

**Shop Talks and Walks workshop:** This maintenance-focused program is designed to provide attendees with practical solutions for everyday challenges.

This program will feature:

- Special events focused on preventive maintenance, equipment efficiency and increasing uptime
- Educational opportunities focused on providing attendees with the tools to solve real-world challenges

### Visit Komatsu

Komatsu is expected to have a large booth in the West Hall (W41945) and welcomes all to take an up-close look at its latest products, designed to help improve your operation. Meet with Komatsu experts to learn more about the equipment, Smart Construction solutions and services offered. ■

### CONEXPO-CON/AGG in focus

Held every three years, CONEXPO-CON/AGG showcases the latest equipment, products, services, and technologies for the construction industry, along with industry-leading education. For more information, visit <https://www.conexpoconagg.com>.

**When:** March 3-7, 2026

**Where:** Las Vegas Convention Center

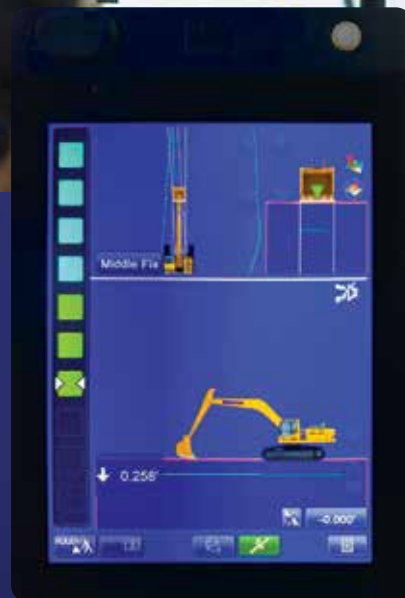
**Expected exhibit space:** 2.9 million square feet

**Expected exhibitors:** 2,000

**Education sessions:** 150



# Technology to help you work smarter



Maximize productivity on your jobsites with advanced automation technology. **Komatsu's intelligent machine control (IMC)** can help you get the most from your machines, crew and carefully designed plans.

- Get new operators up to speed quickly
- Go from mass excavating to finished grading faster than ever
- Help eliminate potential damage to design surface
- Empower operators to work efficiently, pass after pass

Discover more ► [komatsu.com/imc](https://komatsu.com/imc)

**KOMATSU**



# Make the most of your telematics data

## My Komatsu gives you an easy way to collect, view and monitor machine information from Komatsu and non-Komatsu equipment

**T**elematics data can help drive results for business operations, but only when it's collected and analyzed efficiently.

My Komatsu, Komatsu's comprehensive digital hub, analyzes telematics data from your on-machine technology — including Komtrax, Komtrax Plus and ISO API 15143-3 (AEMP 2.0) data from other OEMs — and displays it on easy-to-read dashboards. With My Komatsu, you can access data that's generated by Komatsu and non-Komatsu equipment anytime, from anywhere.

***"It's a huge benefit in time and cost savings that you can monitor an entire fleet on a single platform, regardless of OEM."***

*-Tommy Hergenreder,  
North American Manager,  
Digital Product,  
Komatsu*

My Komatsu minimizes your logins and helps you see your data all in one place. ISO integration and analytics are included as standard features with your registration. ISO API 15143-3 (AEMP 2.0) computer code allows fleet managers to integrate new digital telematics data into existing fleet management systems, letting you see your complete fleet, pull operation reports and set alerts.

"It's a huge benefit in time and cost savings that you can monitor an entire fleet on a single platform, regardless of OEM," said Tommy Hergenreder, North American Manager, Digital Product, Komatsu. "Another is that Komatsu doesn't charge for connecting other APIs, which some OEMs do. Currently, there is a long list of other manufacturers that you can get API credentials for, and it's growing all the time."

Komtrax data flows to Komtrax storage, while ISO 15143-3 (AEMP 2.0) facilitates the extraction

and raw data to your choice of database. My Komatsu connects telematics data from all machines or accesses it through monitoring and analysis services to create powerful analytics dashboard views.

### Benefit your bottom line

With My Komatsu, you can:

- Get actionable information to monitor machines and help guide decisions
- Quickly view and manage data on one dashboard
- Receive maintenance alerts and order parts
- Troubleshoot to minimize downtime
- Monitor for theft and unauthorized use
- Benchmark machine performance
- Track fuel consumption and manage fuel efficiency

Available data points with My Komatsu vary by OEM and machine applications, but they generally include last known location, engine status, cumulative operating hours and more.

"One API credential from the OEM covers all of that manufacturer's machines that you may have and want to input into your My Fleet page on My Komatsu," said Andrew Casey, Digital Solutions Analyst, Komatsu. "This is a very cost-effective, convenient solution to managing a mixed fleet without any additional cost to implement My Komatsu." ■



My Komatsu minimizes logins and displays your data all in one place.



United. Inspired.

## Powerful team

Working together to support your lineup.

Contact your Power location. We're proud to offer equipment from Epiroc.

**KNOXVILLE, TN** 3300 Dozer Lane  
(865) 577-5563 • (800) 873-0961

**CHATTANOOGA, TN** 4295 Bonny Oaks Dr.  
(423) 894-1870 • (800) 873-0963

**NASHVILLE, TN (La Vergne)** 320 Waldron Dr.  
(615) 213-0900 • (800) 873-0962

**MEMPHIS, TN** 3050 Ferrell Park Cove  
(901) 346-9800 • (800) 873-0965

**KINGSPORT, TN** 1487 Rock Spgs. Rd.  
(423) 349-6111 • (800) 873-0964

**TUPELO, MS** 1545 Hwy 45  
(662) 869-0283 • (800) 873-0967

***POWER***  
**EQUIPMENT**



# Komatsu introduces WA475-11 and WA485-11

**These new wheel loaders are built for increased productivity, operator comfort and ease of maintenance**

**K**omatsu's new versatile WA475-11 and WA485-11 wheel loader models are designed to move material efficiently and effectively, helping to increase productivity while providing improved operator comfort and easy maintenance. Sharp focus has been put on reducing total cost of ownership (TCO).

***"In designing the WA475-11 and WA485-11, we focused on what truly matters to our customers based on years of direct customer feedback — efficiency, power, safety and operator comfort."***

*-Bruce Boebel,  
Director of Products and Service,  
Komatsu*

The WA485-11 offers up to 12% lower fuel consumption, 21% more engine power and 13% faster climbing speed than its predecessor, the WA480-8. The WA475-11 provides up to 7% lower fuel consumption, 18% higher engine power and 40% greater climbing speed than the WA475-10.

Both loaders now include Komatsu Hydraulic Mechanical Transmission (KHMT) engineered

for improved fuel efficiency and productivity. Operators will appreciate the large, comfortable four-pillar cab, angle feedback joystick steering and independent work control to help reduce fatigue on long operating days. The new wheel loaders also feature standard rear object detection and a deluxe LED light package to promote enhanced jobsite safety.

"In designing the WA475-11 and WA485-11, we focused on what truly matters to our customers based on years of direct customer feedback — efficiency, power, safety and operator comfort. These wheel loaders build on proven performance of previous models with innovative advancements designed to enhance productivity," said Bruce Boebel, Director of Products and Service, Komatsu. "We're excited to introduce these machines and put them to use for our aggregate customers and beyond."

Both models offer yard loader configurations that include additional stability features such as a larger bucket, wide low-profile tires and additional counterweight designed to support higher productivity in aggregate applications. ■

## Quick specs

Model	Horsepower	Operating weight	Bucket capacity
WA475-11	343 HP	54,542-60,197 lbs.	5.5-6.3 yd <sup>3</sup>
WA485-11	362 HP	61,432-64,997 lbs.	6.4-7.2 yd <sup>3</sup>





# Purpose-built forestry machine

## New TimberPro TN230D log loader engineered for enhanced productivity and operator needs

**B**ased on customer feedback, Komatsu has introduced its new TimberPro TN230D log loader that was built from the ground up and carefully engineered to help drive productivity and provide additional operator benefits.

The 197-horsepower TN230D offers a 36-foot reach and 58,224 foot-pounds of swing torque. It also features Power Max, which temporarily increases engine horsepower and hydraulic flow to support tough forestry tasks.

The TimberPro TN230D is built with proven, high-quality Komatsu components. Its hydraulic system, powertrain, control valve and interior components are designed and manufactured in-house to help confirm performance and quality control.

The TN230D is the first machine in its class segment to feature dual service platforms with electrically actuated platforms on the left

and right sides, offering enhanced access for service and cleaning.

### Numerous benefits

New benefits include easy access via a large, rear-entry cab with service walkways and safety railings, premium heated and cooled seats with adjustable armrests, an elevated cabin with large windows and a front-view camera to enhance visibility, LED lights, and a large overhead skylight.

“We know how demanding forestry environments are—the tough work requires equipment capable of standing up to the job,” said Kyle Kovach, Product Planning Manager. “When we set out to develop a new log loader, we gathered feedback on customer needs then unleashed a team of talented engineers to design this product from the ground up. The result merges quality components with the latest technology to offer a range of productivity, safety and comfort benefits.” ■

### Quick specs

Model	Horsepower	Reach	Swing torque
TimberPro TN230D	197 HP	36 feet	58,224 foot-pounds





# The original construction broom company



## Broce Broom

With a wide range of options, Broce Brooms are versatile enough to handle nearly any sweeping challenge. From optional curb sweepers and water spray systems to scraper blades and a choice of engines, you can customize your Broce Broom to meet individual job site needs.

All self-propelled Broce Brooms have a standard hydrostatic drive and a compact wheel base for better maneuverability in tight places. Our sound-suppressed cab provides maximum operator comfort and visibility for optimal productivity and safety.

To find out how Broce Brooms can help you make a clean sweep every time, contact your local Power Equipment branch for a demonstration.

**POWER**  
EQUIPMENT **THE POWER TO PERFORM**

#### KNOXVILLE

3300 Alcoa Highway  
Knoxville, Tennessee 37920  
(865) 577-5563  
1-(800) 873-0961

#### CHATTANOOGA

4295 Bonny Oaks Drive  
Chattanooga, Tennessee 37406  
(423) 894-1870  
1-(800) 873-0963

#### NASHVILLE

320 Waldron Drive  
La Vergne, Tennessee 37086  
(615) 213-0900  
1-(800) 873-0962

#### MEMPHIS

3050 Ferrell Park Cove  
Memphis, Tennessee 38116-3502  
(901) 346-9800  
1-(800) 873-0965

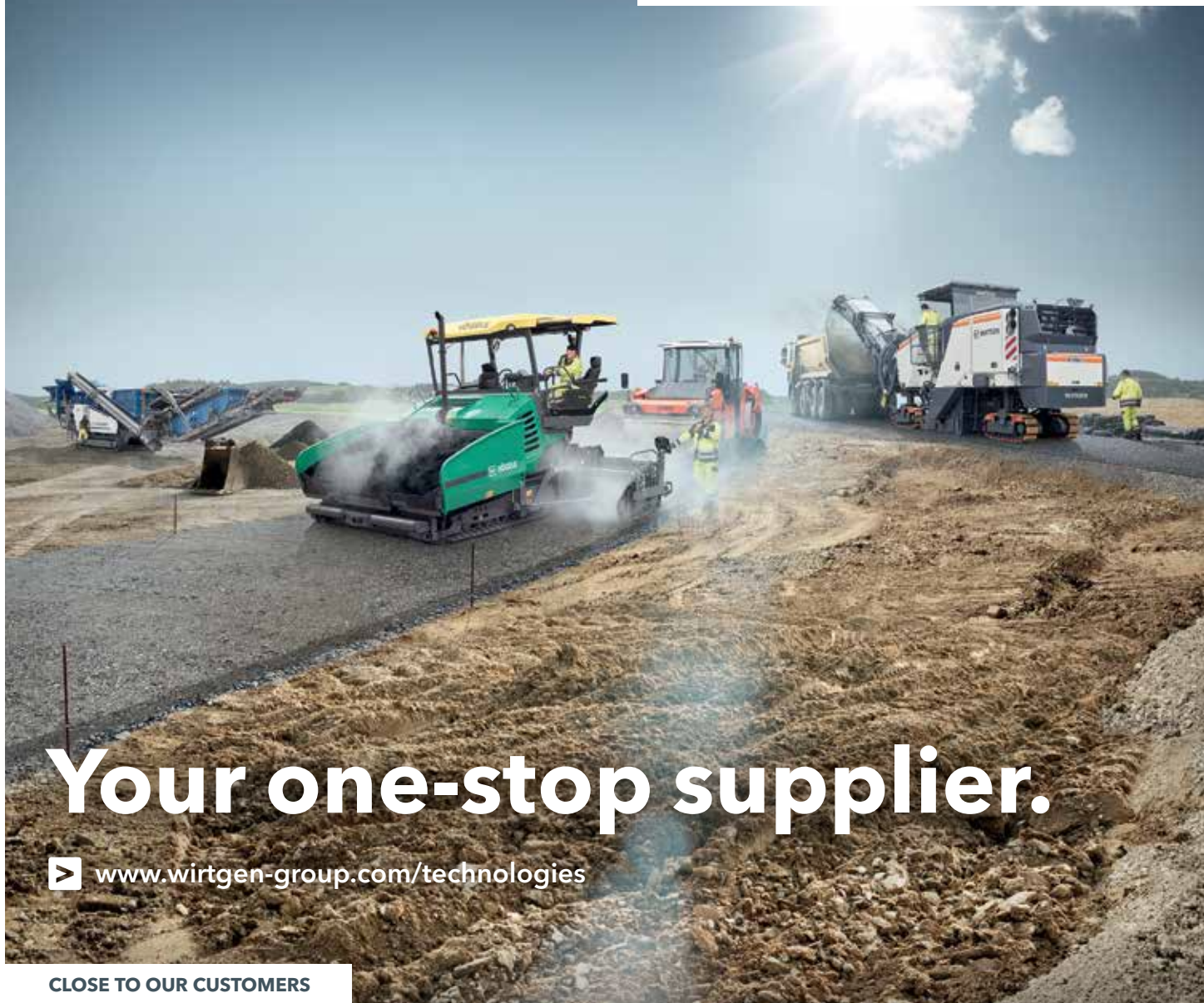
#### KINGSPORT

1487 Rock Spgs. Road  
Kingsport, Tennessee 37664  
(423) 349-6111  
1-(800) 873-0964

#### TUPELO

1545 Highway 45  
Saltville, Mississippi 38866  
(662) 869-0283  
1-(800) 873-0967

[www.PowerEquipCo.com](http://www.PowerEquipCo.com)



# Your one-stop supplier.

▶ [www.wirtgen-group.com/technologies](http://www.wirtgen-group.com/technologies)

**CLOSE TO OUR CUSTOMERS**

**ROAD AND MINERAL TECHNOLOGIES.** With leading technologies from the WIRTGEN GROUP, you can handle all jobs in the road construction cycle optimally and economically. Put your trust in the WIRTGEN GROUP team with the strong product brands WIRTGEN, VÖGELE, HAMM, KLEEMANN.

▶ [www.wirtgen-group.com](http://www.wirtgen-group.com)

**WIRTGEN**



**VÖGELE**



**HAMM**



**KLEEMANN**

**POWER**  
EQUIPMENT

[www.PowerEquipCo.com](http://www.PowerEquipCo.com)

**KNOXVILLE**

3300 Dozer Lane  
Knoxville, Tennessee 37920  
(865) 577-5563  
1-(800) 873-0961

**MEMPHIS**

3050 Ferrell Park Cove  
Memphis, Tennessee 38116-3502  
(901) 346-9800  
1-(800) 873-0965

**CHATTANOOGA**

4295 Bonny Oaks Drive  
Chattanooga, Tennessee 37406  
(423) 894-1870  
1-(800) 873-0963

**KINGSPORT**

1487 Rock Spgs. Road  
Kingsport, Tennessee 37664  
(423) 349-6111  
1-(800) 873-0964

**NASHVILLE**

320 Waldron Drive  
La Vergne, Tennessee 37086  
(615) 213-0900  
1-(800) 873-0962

**TUPELO**

1545 Highway 45  
Saltillo, Mississippi 38866  
(662) 869-0283  
1-(800) 873-0967



# Pave effortlessly

## WIRTGEN GROUP rolls out new SP 33 slipform paver at World of Concrete 2025

**V**ersatile, maneuverable and efficient describe the new WIRTGEN SP 33 slipform paver that has two configurations, which thanks to its fully modular construction concept, enable the paving of monolithic concrete profiles. These include curbs and berms, rectangular profiles, concrete safety barriers up to a height of 52 inches, and drainage and gutter profiles.

In the offset paving configuration, the SP 33 can effortlessly pave concrete slabs with a pave width of up to 7 feet, and in combination with a trimmer, up to 8 feet wide. The Crosspave version can pave slabs up to 10 feet wide transversely to the direction of travel of the machine. Both solutions can be controlled by the innovative operating concept with an event-driven graphic display. The ECO mode detects every working situation without the need for manual intervention by the operator and ensures automatic, load-optimized regulation of engine output for optimum engine efficiency, maximum fuel economy and low noise emissions.

The operator is further assisted by the AutoPilot 2.0 control system. The two crawler units with parallelogram swing legs at the front and a laterally adjustable crawler unit at the rear enable zero-clearance installation and maximum flexibility. This makes it the ideal choice for use on construction sites that demand a high degree of maneuverability and the paving of tight radii.

### Production System: WPS 102i, SP 124i and TCM 180i

With its concrete paving train orchestration, WIRTGEN also offers completely coordinated machine technologies and practice-oriented equipment variants. They help users to fulfill quality requirements, in particular regarding outstanding evenness of the paved concrete surface. The Production System comprising a WPS 102i placer/spreader, an SP 124i inset slipform paver and a TCM 180i texture curing machine was also on display at World of Concrete.

### Stringless paving with AutoPilot 2.0 provides process efficiency

Conventional concrete paving methods rely on a physical stringline for controlling the paving process. As an alternative, WIRTGEN offers its field-proven AutoPilot 2.0 control system, which is available for all offset pavers and placer/spreaders. The need for a physical stringline is eliminated, which results in considerable savings in terms of time and effort and increases the safety of the paving crew. At the same time, the system precisely controls both the height adjustment and steering of the machine. A GNSS signal and, depending on the configuration, various local sensors serve as a reference. It also enables fast and precise paving of tight radii and complex geometries. ■



WIRTGEN's new SP 33 slipform paver can pave concrete slabs up to 7 feet wide in the offset paving configuration and up to 10 feet transversely to the direction of travel.

# Debuts for WIRTGEN GROUP

**W 210 XF cold milling machine featured as new equipment and innovative technology are showcased during World of Asphalt and AGG1**

**W**IRTGEN introduced its W 210 XF during the World of Asphalt Show & Conference and AGG1 Aggregates Academy & Expo, adding it to its portfolio of large milling machines. The new model combines high performance and efficiency with compact dimensions.

Offering milling widths between 6 feet, 7 inches and 8 feet, 2 inches and a maximum milling depth of 13 inches, the approximately 65,000-pound W 210 XF is ideal for tasks ranging from surface layer rehabilitation and complete pavement removal to fine milling work with maximum efficiency in a wide range of project scenarios. The main areas in which the mill is deployed are where high milling performance and relatively compact dimensions are required, including freeways, state highways and airports. The innovative MILL ASSIST machine control system assures sustainable and efficient machine operations with high productivity.

"The W 210 XF can be utilized on a variety of projects, including bigger highway jobs, but it's nimble enough that you can put it on a residential city street as well as parking lots," said Tom Chastain, Milling Product Manager, WIRTGEN. "One of the standout features of the W 210 XF is a new 18-liter, 777-horsepower engine that requires no DEF. It has more horsepower with lower fuel consumption and CO2 emissions compared to the previous F-series model."

The WIRTGEN GROUP Performance Tracker Milling is available for the automated documentation of milling tasks. The operator can view the automated construction site

documentation and display the CO2 emissions for the entire construction site at a glance and in real time on the machine's control panel.

"Performance Tracker gives us all the job data; with lasers and GPS, it's taking more than 60 inputs a second," noted Chastain. "At the end of the day, we push one button and get a report showing fuel consumption, water, cutting tool consumption, square yards, cubic yards, how many tons were put in individual trucks, idle time and more."

Chastain added, "At World of Asphalt, we showed the W 210 XF with a new North American-style canopy that can be rolled back in and folded down below the hood level. It's good for transport or working in areas where there may be overhanging trees."

## Smart Compact launch

WIRTGEN launched its Smart Compact Basic and Smart Compact Pro for HAMM rollers during World of Asphalt. Smart Compact Basic uses sensors to measure asphalt surface temperature and an accelerometer on the front drum to measure stiffness. A weather station on the top of the roller measures air temperature and wind speed.

"With all the sensor values, we're able to calculate what the asphalt temperature cool down rate will be," stated Dan Sant Anselmo, HAMM Applications Support Manager, WIRTGEN. "This is incorporated into a screen on top of the platform for the operator, where they can select course thickness of the surface mix, binder or base. Within the parameters, the machine will vibrate depending on sensor feedback."

Sant Anselmo continued, "We take this one step further with Smart Compact Pro. With that, we have incorporated a sensor that is a real-time density scanner. This is the first time where you're actually able to scan the material and see what the true density of the material is. Along with that, we calibrate the sensor to the mix using a PQI or Troxler gauge. Once calibrated, you can go to work. If we set a point of 95% density, the machine will continue to use dynamic compaction until it hits that, then shuts the vibration off. So, we don't have fears of over-compacting or under-compacting, and we have hopefully eliminated the need for coring in the future."

With the HD+ 120i VIO-2 HF, the WIRTGEN GROUP also showed a tandem roller with three-point articulation steering designed



VÖGELE's MINI 500 is its smallest paver. With widths ranging from 10 inches to 5 feet, 11 inches, it is ideal for small-scale paving on limited-space sites.





WIRTGEN's new W 210 XF cold milling machine combines high performance and efficiency with compact dimensions.

especially for use in North America. It is fitted with two maintenance-free VIO drums offering a choice of working with static compaction, vibration or oscillation. Also appearing at the show was the HX 70i tandem roller, the HP 100i pneumatic tire roller for chipseal applications, and the HD 12e VV with a fully electric drive system that enables emission-free compaction and particularly low operating noise.

For the asphalt paving sector, VÖGELE highlighted technology that includes its ability to do 3D paving using models from a variety of companies, including Topcon, Trimble and Leica. Laikram "Nars" Narsingh, Application and Technology Specialist with the WIRTGEN GROUP, showed how that's possible in a plug-and-play atmosphere with VÖGELE pavers.

"We have an interface on the backside of the paver that allows you to use any of those systems while using VÖGELE's machine controls, which simplifies installation and makes it more reliable and economical," explained Narsingh.

VÖGELE presented the SUPER 1703-3i wheeled universal-class paver, the SUPER 2000-3i highway-class tracked paver and a mini-class SUPER 700i. A highlight of the show was the smallest VÖGELE paver, the MINI 500, with a base width of only 2 feet, 11 inches and working widths from 10 inches to 5 feet, 11 inches. It is the ideal choice for paving between railroad or streetcar tracks, capping narrow trenches, or the construction of footpaths and cycleways.

### Impact introduction

A highlight for the asphalt recycling sector included a close look at the new KLEEMANN MOBIREX MR 100i NEO mobile impact crusher. It is the only machine in its performance class to offer fully automatic crusher gap adjustment and zero-point determination.



HAMM's HD+ 120i VIO-2 HF offers versatility with two VIO drums that enable a total of nine different compaction mode combinations.

"At 78,000 pounds, it's the smallest impact crusher that KLEEMANN has built to date, but it's a really good machine for our customers to get out there and be transportable and versatile," elaborated Cole Childress, Technical Sales Manager, WIRTGEN GROUP. "As we developed it, we took a lot of the benefits and features from our larger machines such as the continuous feed system, SPECTIVE CONNECT, overload protection and more. It's also the first crusher we have with an onboard power pack. There are several optional features available such as a wind sifter too."

The innovative "Lock and Turn Quick Access" safety system allows users to open the crusher without tools in only 30 seconds. Operation of the KLEEMANN crusher directly from the SPECTIVE SWITCH control unit is particularly easy and intuitive. With SPECTIVE CONNECT, operators can access all relevant data such as engine speeds, consumption values and filling levels via a clearly laid-out display on a smartphone or tablet. ■

# Interactive experience for customers

**Komatsu showcases new mining machines and Smart Quarry solutions at Quarry Days, offering a unique opportunity for attendees to operate the equipment**



Watch the video

**K**omatsu's Quarry Days 2025 brought a record-breaking number of attendees to the company's Arizona Proving Grounds near Tucson. The annual event highlighted a diverse range of Komatsu's heavy equipment and introduced new products tailored specifically for quarry and mining operations.

Bruce Boebel, Komatsu's Director of Product and Services, expressed enthusiasm about the successful event.

"We've had a great turnout this year — in fact, it's a record turnout," Boebel declared. "Customers from many different areas in North America attended, so it's a very diverse group. We saw great interaction this week."

Quarry Days primarily showcased Komatsu's mining support gear, including significant offerings like large excavators and dozers. Throughout the week, attendees had the opportunity to explore and test over 20 products and solutions, guided by Komatsu's team of experts.

---

***"Customers get to interact directly with product managers, discuss specific challenges and solutions, and see firsthand why Komatsu equipment stands apart."***

*-Bruce Boebel,  
Director of Product and Services,  
Komatsu*

---



Power Equipment Company's Aaron Dockery, Tri Country Crushed Stone LLC's Chase Boruff, Power Equipment's Justin Kiser, and Tri Country Crushed Stone's Mike Malicote and Rodney Murphy explore Quarry Days.

Vulcan Materials Company's Wade Thornton, Tilcon New York Inc.'s Billy Paul, CRH's Andrew Pylypyshyn, Tilcon New York Inc.'s Austin Goodis, CRH's Matt Schumann, Komatsu's Thomas Bychowski and Rebecca O'Donnell, Tilcon New York Inc.'s John Selman, CRH's Mark Pillsbury, and Mid-South Aggregates' Dale Long check out a Komatsu wheel loader on display.



Highlights included live demonstrations of Komatsu's latest releases, the HD605-10 and WA700-8, and an exclusive preview of the upcoming WA475-11 and WA485-11 wheel loaders. These new machines reflect Komatsu's commitment to delivering solutions that help operators boost productivity and efficiency at quarry sites.

For instance, the new WA485-11YL is available in a yard loader (YL) configuration. The new WA485-11YL adds unique features to the standard base model, specifically designed for demanding quarry and aggregate applications. It is equipped with a large-capacity bucket and counterweight. This makes this purpose-built wheel loader a great choice for handling, stockpiling and loading processed material onto commercial trucks with three passes.

"We're highlighting the new WA700-8 wheel loader, which is a four-pass match for our new 70-ton HD605-10 rigid haul truck," Boebel noted. "We're also debuting our WA475-11 and WA485-11 loaders that feature an all-new engine and steering system, along with other enhancements."

Komatsu further demonstrated its commitment to innovation through its Smart Quarry and My Komatsu solutions. These digital solutions, applicable to Komatsu and competitor equipment alike, provide actionable insights to help optimize quarry operations.

"Our Smart Quarry Site system lets you monitor machine interactions, fuel efficiency, and identify operational bottlenecks," explained Boebel. "It's a great resource that can be integrated across a mixed fleet to help enhance site optimization."





## ► VIDEO

Komatsu showcases a range of equipment at Quarry Days.

### Hands-on opportunities

During Quarry Days, attendees had the opportunity to operate the showcased equipment with the guidance and supervision of experienced Komatsu trainers and employees.

"Some other OEMs don't allow customers on-site to operate equipment; that's one unique aspect Komatsu prides itself on," stated Boebel. "Customers can safely operate machines with headsets and trainers in the vehicles, providing an interactive, valuable experience."

Beyond showcasing equipment, Quarry Days provided critical networking opportunities between customers and Komatsu experts.

"Customers get to interact directly with product managers, discuss specific challenges and solutions, and see firsthand why Komatsu equipment stands apart," Boebel remarked. "These conversations help customers determine the ideal equipment combinations for their unique quarry operations."

### Next time

Interested customers can participate in future Quarry Days by coordinating with their local Komatsu distributor.

"We hold Quarry Days regularly, and we encourage customers to contact their distributor about participating," Boebel advised. "We tailor the experience based on customer interest, ensuring they get maximum value from the event."

Reflecting on the success of this year's event, Boebel warmly thanked attendees for their participation.

"It's been a great, safe event with exceptional feedback," Boebel concluded. "We welcome all customers to join us again next time." ■




Rogers Group Inc.'s Marty Edwards and Nick Pearman, Power Equipment's Michael Luster, and Rogers Group Inc.'s Larry Crisp enjoy Quarry Days.




Power Equipment's Robby Allen, Martin Marietta's Brendan Ferguson, and Komatsu's Josue Tucnez view a Komatsu HD1500 mechanical haul truck.





Montabert V32 variable  
hydraulic breaker



Lehnhoff  
quick coupler

# Innovative solutions. Positive transformation.

You need a partner that can meet your needs and embrace the future. One with new solutions for a changing world. Together, we can work toward a better future.

Komatsu



Montabert



Lehnhoff



**KOMATSU**

**POWER**  
EQUIPMENT



**Lehnhoff®**



# Advanced formula with phosphates

**Komatsu Supercoolant helps provide better protection against corrosion and a longer life to reduce downtime and costs**

**Y**our equipment can face a range of temperature extremes. Without proper protection against high heat and extreme cold, corrosion could occur in the engine, which leads to performance issues. The new Komatsu Supercoolant delivers a formula designed to better protect components against the elements and premature failure.

Komatsu Supercoolant uses advanced POAT (phosphated organic acid technology) with corrosion inhibitors. The new formula has been certified for use in Cummins heavy-duty diesel engines and meets CES 14603 standards. This means it can be used in all Komatsu equipment and other all-makes equipment with Cummins engines.

---

***"The new Komatsu-specific formula adds phosphates that provide extra protection for components against corrosion. That protection helps ensure long life and that components don't prematurely wear."***

*- Tony Laskero,  
Senior Manager of Aftermarket,  
Komatsu*

---

"The new Komatsu-specific formula adds phosphates that provide extra protection for components against corrosion," explained Tony Laskero, Komatsu's Senior Manager of Aftermarket. "That protection helps ensure long life and that components don't prematurely wear."

In addition to better protection, the new Komatsu Supercoolant formula has a longer replacement interval — up to 12,000 hours with regular KOWA (Komatsu Oil and Wear Analysis) sampling and adding an extender additive after 6,000 hours.

"KOWA should be performed at every maintenance interval as it's similar to a 'blood test' that can identify issues that need to be addressed before they become catastrophic," Laskero said. "With this new Komatsu Supercoolant, at 6,000 hours, you should perform a KOWA, and if everything is in good working order, you can add the extender to prolong life. An additional KOWA should be performed at 9,000 hours. At 12,000 hours, it's time to flush the cooling system and add new Supercoolant."

When switching from the previous Komatsu Supercoolant formula, a cooling system flush is not needed. However, it should not be mixed with other coolant brands.

"If you are using a different brand of coolant currently, it is advised that you perform a coolant system flush before using Supercoolant for the first time," stated Laskero. "Once you have Komatsu Supercoolant in your machinery, you get extended interval replacement, which can help reduce downtime and maintenance costs. A bonus is you can use it in non-Komatsu equipment with Cummins engines."

Komatsu Supercoolant is available in 1-gallon jugs, 5-gallon pails, 55-gallon drums and 320-gallon totes through your Komatsu distributor and on My Komatsu. Consult your machine's operator and maintenance manual (OMM) or distributor representative for the proper fluid level. ■

*All comparisons are to the previous Komatsu version or model unless otherwise stated.*



**The new Komatsu Supercoolant formula uses advanced POAT (phosphated organic acid technology) with corrosion inhibitors.**



# ***LeeBoy***

## **BUILDING AMERICA ONE ROAD AT A TIME**

*LeeBoy's Heavy Commercial pavers deliver a host of features and benefits to the paving professional above their competition. LeeBoy's best in class designs represent the highest production pavers minimizing power losses with more efficient hydraulic systems.*

- ✓ Full size end auger flight combined with rounded auger back move material to the extension efficiently.
- ✓ Belt driven generator reduces power losses and generates less hydraulic heat load for lower operating temperatures.
- ✓ Counter rotating tracks and compact machine designs improve maneuverability and efficiency in tight spots.
- ✓ S-curve heating elements also provide more even heating of the screed plate.

LEARN MORE AT [WWW.LEEBOY.COM](http://WWW.LEEBOY.COM)

**POWER**  
EQUIPMENT



# New LeeBoy equipment on display

**BR48R rubber tire roller provides a smooth mat and the rate-controlled TDC600 tack distributor is good for a wide variety of paving applications**

**L**eeBoy showcased several products during the World of Asphalt Show & Conference and AGG1 Aggregates Academy & Expo, including its new 24.4-horsepower BR48R nine-wheel rubber tire roller that features excellent visibility to the edge of the tires during rolling.

"You can use the BR48R for a wide variety of applications, including driveways, parking lots and roadways," said Chris Broome, Senior Product Manager, LeeBoy. "It has five tires in the front, four in the back. The rubber tires are good for sealing up the mat as they bring fines up to the top of the mat, so you get a better finished product. This machine has a weight of about 5,300 pounds, so you don't really need a weight kit, but we will have one of those available in the future."

According to Broome, the BR48R pairs well with LeeBoy's high-production, heavy-commercial-class pavers such as the 125-horsepower 8520 and 8608 that have paving widths up to 15 feet. The BR48R has a 60-inch compaction width and 40% gradability.

---

***"Anywhere you want a nice, sealed up mat – two-lane roads, large parking lots, neighborhood streets — the BR48R is appropriately sized."***

*- Chris Broome,  
Senior Product Manager,  
LeeBoy*

---

"Anywhere you want a nice, sealed up mat – two-lane roads, large parking lots, neighborhood streets — the BR48R is appropriately sized," stated Broome. "It's usually an intermediate roller that typically follows behind a breakdown roller, which is the first in the pack. A steel drum would come behind the BR48R and finish the mat."

The BR48R has two scrapers, a coco mat and a stainless steel spray bar with adjustable nozzles. The roller features fold-up front and rear spray bar access, which is a premium feature according to Broome. It also has standard mirrors; road, turn and work lights; and a large steel hood for easy access to service points.

## 600-gallon capacity

In addition to the BR48R, LeeBoy showcased its new TDC600 tack distributor with a rate-controlled smaller tank that fits on a chassis

instead of being mounted to a trailer. It has a 600-gallon capacity, a 12-foot crank-down bar (a powered lift bar is an option) and remote control operation. A diesel burner heats tack quickly.

"Because it's rate-controlled, it can be used in any paving application," noted Broome. "You can spray two-lane roads. It's a nice chassis-mounted model that gives you good performance at a very cost-effective price point. You don't need a CDL or tanker endorsement to operate. We encourage anyone in the paving industry to check out these new products and our extensive lineup of paving equipment." ■



LeeBoy's new BR48R nine-wheel rubber tire roller features excellent visibility to the edge of the tires during rolling.

# Cost-effective way to maintain productivity

Aggregate producer Harshman Construction uses genuine Komatsu Reman components to increase the life of its high-hour wheel loaders



Watch the video

**M**ultigenerational family business Harshman Construction LLC continues to serve customers with a wide range of aggregate products nearly 50 years after Frank Harshman and his sons Frank, Jeff and Warren started the operation. Today, the third generation of the Harshman family oversees 17 locations that produce hundreds of thousands of tons of materials each year.

"We have six crushing plants and a dirt crew that does all our own stripping," elaborated Service Manager Burton Harshman, who leads the business with his brothers Sam and Casey as well as their cousins Katie, Trenton and Brendan. "We are strictly a material supplier, with products ranging from ag lime to riprap. Base rock, concrete stone and asphalt stone are our main products."

With a fleet of more than 175 pieces of equipment that includes many Komatsu excavators and wheel loaders, Burton is responsible for fleet management that ensures the machinery continues to perform at a high level in order to maintain production.

"We pride ourselves on taking care of equipment, and because of that we have a large number of high-hour Komatsu machines that remain productive," stated Burton. "We regularly service our equipment and change components as needed. A few years ago, we made the decision along with our Komatsu distributor to rebuild a couple of WA600 loaders with Komatsu Reman components as opposed to buying new. It proved to

be a very cost-effective way to maintain their productivity and extended the life of those machines."

In addition to being more cost-effective, the quality of genuine Komatsu remanufactured parts and components is better than will-fit items. Plus, the Reman parts and components are backed with a one-year, unlimited-hour warranty and a quality assurance program of up to 10,000 hours on major components. With fewer raw materials used in remanufacturing, they also contribute to improved sustainability.

## Easy decision

After seeing the high production the rebuilt WA600 wheel loaders delivered, the Harshman Construction team confidently decided to rebuild a Komatsu WA500 wheel loader on its own with Komatsu Reman components. Harshman Construction's maintenance staff replaced the engine, transmission and pumps.

"The frame of the machine was really good, and the pins and bushings were still in excellent condition, even at 18,000 hours," said Burton. "That, along with the cost savings of using Reman components and the warranty and assurance, made the decision to rebuild an easy one. Basically, we're getting a like-new machine that we can run for several thousand hours. The savings allow us to invest more resources into growing our business." ■

*\*The opinions expressed here are from the end user as quoted. The results described herein are those of these end users under certain conditions. Individual results may vary.*



Harshman Construction's rebuilt Komatsu WA600 wheel loader utilizes Komatsu Reman components.



Year/Make/Model	S/N	Equipment Number	Hours
<b>Compaction</b>			
2019 HAMM H 7i	H222823	E004718	719
2019 HAMM H 7i	H222854	E004719	731
2019 HAMM H 7i	H222827	E004720	770
2019 HAMM H 10i	H2351317	E004722	1,610
2019 HAMM H 10i	H2351507	E004723	1,192
<b>Crawler Carriers</b>			
2018 Terramac RT14R-2	14RG0064	C6267	3,432
2020 Terramac RT14R	14RH00149	C6268	2,832
<b>Dozers</b>			
2023 Komatsu D51EXi-24	B25387	E005056	1,315
2023 Komatsu D51EXi-24	B25374	E005369	1,013
2019 Komatsu D51EXi-24	B20602	C1232-I	4,511
2024 Komatsu D51PX-24	B25493	BTP24N08	600
2021 Komatsu D51PX-24	15499	E005108	2,436
2023 Komatsu D51PX-24	16257	E004416	2,620
2018 Komatsu D61EX-24	B60510	PTC1174	5,558
2024 Komatsu D61PX-24	B66800	E005438	4,490
2023 Komatsu D61PX-24	B65880	BTE24503	3,463
2021 Komatsu D61PXi-24	B65135	E004491	3,362
2020 Komatsu D61PXi-24	B61177	J00831	2,883
2023 Komatsu D61PXi-24	B66209	J00847	1,963
2021 Komatsu D65PXi-18	92540	C6137-I	5,313
2019 Komatsu D65EX-18	91949	C1287-P	5,273
2023 Komatsu D65EX-18	96294	J00846	1,675
<b>Excavators</b>			
2023 Komatsu PC130-11	92518	J00856	200
2022 Komatsu PC138USLC-11	C30273	E005356	2,463
2023 Komatsu PC210LC-11	C81766	E003524	2,564
2023 Komatsu PC360LCi-11	A38710	E003058	3,805
2020 Komatsu PC490LC-11	A42494	BTE24D25	5,914
<b>Pavers</b>			
2019 LeeBoy 8515	242518	BTF24D17	2,508
2021 LeeBoy 8520	8520-304105	E004844	2,995
2023 LeeBoy 8520C	8520.380703	E000872	990
<b>Wheel Loaders</b>			
2024 Komatsu WA200-8	88418	E004541	155
2019 Komatsu WA270-8	A28654	E003172	4,925
2020 Komatsu WA270-8	A28898	E003173	4,680
2023 Komatsu WA270-8	86206	E004412	4,389
2021 Komatsu WA270-8	A29176	C1421	4,203
2022 Komatsu WA270-8	82523	C1480	2,905
2022 Komatsu WA270-8	85474	C1470	3,602
2020 Komatsu WA320-8	A39267	C1384	3,723
2021 Komatsu WA320-8	A39621	C1417	4,028
2021 Komatsu WA320-8	A39622	C1418	3,832
2023 Komatsu WA500-8	A97957	E005449	9,108
2019 Komatsu WA500-8	A96908	C6054	11,265
2020 Komatsu WA600-8	80267	BPZ24505	7,788
2019 Komatsu WA600-8	80128	BPZ22012	14,813



# ***CERTIFIED RENTAL®***

Your top choice for **heavy equipment rentals**  
across the South, East, & Midwest!

## **BRANDS INCLUDE**

- Komatsu
- Hamm
- Montabert
- Terramac
- Takeuchi
- & more!



**Call our hotline to learn more about rental options!**  
**(800) 997-7530 | CERTIFIEDRENTAL.COM**

**POWER**  
EQUIPMENT



**CONTACT YOUR LOCAL  
BRANCH TODAY!**

**CHATTANOOGA, TN**  
(423) 894-1870

**KINGSPORT, TN**  
(423) 349-6111

**KNOXVILLE, TN**  
(865) 577-5563

**MEMPHIS, TN**  
(901) 346-9800

**NASHVILLE, TN**  
(615) 213-0900

**LITTLE ROCK, AR**  
(501) 823-4400

**SPRINGDALE, AR**  
(479) 927-1672

**TUPELO, MS**  
(662) 869-0283



**SCAN TO VISIT  
OUR WEBSITE**